

the  
**Henry  
Ford**

# effect

® IMPACTING THE NEXT GENERATION THROUGH THE POWER OF GIVING

VOLUME 12 / 2019

## CULTIVATING THE FUTURE

Teaching farming and foodways  
to the next generation

PAGE 6





A Letter from The Henry Ford's President and CEO

# Looking forward as we approach our centennial

Dear Friends,

Our 90th anniversary has been a milestone year in many ways. Thanks to your support, we will have marked this historic anniversary not just by celebrating what we have built together but by looking forward to all that we will do to offer every child the opportunity to reach their greatest potential as we approach our centennial.

Thanks to your generous giving, our comprehensive campaign, The Innovation Project, has raised over \$98 million toward our \$150 million goal, and the work made possible by this campaign is starting to be activated around the campus.

As part of our goal to make our stories of inspiration accessible to all, we are proud to have joined the Detroit Public Schools Community District's STEAM Cultural Passport program, offering all of the district's fourth- and fifth-graders free field trips to The Henry Ford. Opening our doors to the community in this way is essential to reaching our future innovators and entrepreneurs.

Invention Convention U.S. Nationals once again transformed Henry Ford Museum of American Innovation into a hub for young inventors, with nearly 500 students presenting their creative solutions to everyday problems over three days at the museum. With over 120,000 students worldwide participating in Invention Convention events across the globe, this program truly captures the mission upon which we were founded.

This year, we celebrated two major anniversaries: the 10th anniversary of Maker Faire Detroit and the 30th anniversary of our Youth Mentorship Program. Old Car Festival, America's longest-running antique car show, and our summer exhibit in The Gallery by General Motors, *Star Trek: Exploring New Worlds*, both achieved the highest attendance in recent years. Our television shows, *The Henry Ford's Innovation Nation* and *Did I Mention Invention?*, are now reaching over 81 million viewers annually. We continue to make progress digitizing our collection, with over 86,000 artifacts now available online to learners around the globe.

Thank you for joining us as we work to unlock the potential of the next generation of innovators, inventors and entrepreneurs. With your continued support, we will build on our legacy of presenting America's stories and experiences, and make the next 10 years our most momentous yet.

Sincerely,

*Patricia*  
PATRICIA E. MOORADIAN

For details on specific programs and initiatives comprising The Innovation Project, visit [theinnovationproject.org](http://theinnovationproject.org).



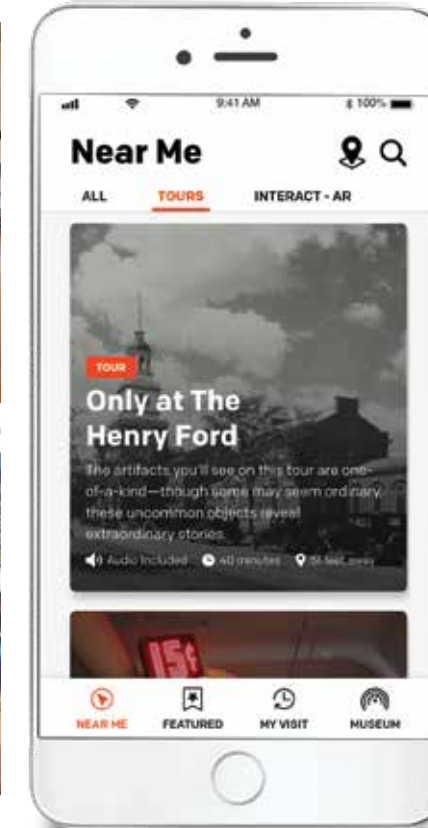
PHOTO BY ROY RITCHIE



THE INNOVATION PROJECT

## Campaign in Action

Investments in The Henry Ford's Innovation Project are funding accessible and inclusive learning through digital tools, experiential programs and exhibitions as well as innovation, invention and entrepreneurial education.



### We are already making an impact.

**We've made** several improvements to elevate the physical experience and storytelling elements on the floor at Henry Ford Museum of American Innovation, including adding engaging new digital columns (top) in the museum plaza and near the agriculture exhibit. Also, The Henry Ford's mobile app, THF Connect, is now available for download for both iOS and Android at [thf.org/connectapp](http://thf.org/connectapp).

**We're set** to open *Driven to Win: Racing in America*, our new permanent museum exhibit presented by our Partner in Innovation, General Motors (bottom). Thanks to an early leadership gift to The Innovation Project, the exhibit will debut in spring 2020 to guide visitors through the worlds of those who invented their way into the winner's circle ... and often changed the world in the process.

**We've invited** two successful entrepreneurs, Melvin Parson of We the People Growers Association (see Page 6) and Richard Sheridan of Ann Arbor-based Menlo Innovations, to complete residencies at The Henry Ford as part of the Entrepreneur-in-Residence Program.

DIGITAL COLUMNS PHOTO BY BLUECADET

## Contents

### Stories of Impact

- Accessibility 4
- Learning & Engagement 5
- Entrepreneurship 6

- Ways to Give 8
- Volunteer Stories 10
- Operating Budget 11
- 2018 Honor Roll 12

### ON THE COVER

Melvin Parson (in gray hat), The Henry Ford's first Entrepreneur in Residence, gives children from the Detroit chapter of Jack and Jill of America, an organization that promotes leadership development in African-American youth, the opportunity to get their hands dirty at his Ypsilanti farm. The field trip was an exercise to help the group better understand where good food comes from and see themselves as their neighborhoods' future farmers.

PHOTO BY CODY RYAN MARTELL





# Stories of Impact: Accessibility

With your support, The Innovation Project is giving the next generation of learners, entrepreneurs, inventors and innovators uncompromising accessibility to The Henry Ford

Educational equity. No barriers. The Henry Ford is making good on its Innovation Project promise to provide more accessible environments on campus and give broader audiences the opportunity to experience all it has to offer.

Fourth- and fifth-graders attending Detroit Public Schools Community District (DPSCD) now know this firsthand. Late last year, The Henry Ford became a part of the 2018-2019 DPSCD STEAM Cultural Passport program, which gives students (K-5) the opportunity to experience local cultural/educational opportunities and refine their observational, problem-solving and analytical skills. As an approved passport partner, The Henry Ford provided complimentary field trips to Greenfield Village to all of the district's fourth-graders and trips to Henry Ford Museum of American Innovation to all fifth-graders.

"We believe the goal of the Cultural Passport program to engage students in real-world, hands-on learning strongly aligns with the mission of The Henry Ford," said Patricia E. Mooradian, president and CEO of The Henry Ford. "By providing access to our unparalleled Archive of American Innovation to DPSCD students, we can help inspire them."

Through the field trips, students explored themes of design and energy, social transformation and math, among others. The Henry Ford also worked with DPSCD educators to co-create and implement customized field trip curricula that were the most relevant to what their students were learning in the classroom.

For Pamela Hornbuckle, a DPSCD fifth-grade teacher, the student experience with human rights, agriculture and Michigan history was invaluable, extending learning far beyond the classroom. "I wish you could have seen their excitement to learn as they read the history of the various tools, equipment, people and events. They saw history in motion," she said of her students. "The depth of engagement and the rich discussions my students had during and after the field trip, this would be a great trip every year in fifth grade."



**DID YOU KNOW? /** The Henry Ford joined several other local educational and cultural institutions as a Cultural Passport partner to the DPSCD in 2018-19, including the Ann Arbor Hands-On Museum, the Detroit Zoo, the Michigan Science Center, Cranbrook Art Museum and Charles H. Wright Museum of African American History.

According to Lucie Howell, chief learning officer at The Henry Ford, her team, along with the curatorial staff, will continue to work with the DPSCD to collaboratively design future curriculum-aligned experiences and supporting resources, helping The Henry Ford meet the overarching goals of The Innovation Project campaign. "We want to achieve greater accessibility, inclusivity and exposure to give every child the opportunity to reach their greatest potential," said Howell. "By becoming a Cultural Passport partner to the DPSCD, we can encourage students to tap into their sense of 'I can, too!' through discovery and experiences before, during and after their visit to The Henry Ford."

◀ Through field trips to Henry Ford Museum of American Innovation and Greenfield Village, students from Detroit Public Schools Community District explored themes of design and energy, social transformation and more. PHOTOS BY KMS PHOTOGRAPHY



# Stories of Impact: Learning & Engagement

With your support, The Innovation Project is providing tomorrow's leaders with unprecedented experiential learning frameworks and resources from The Henry Ford

The 2019 Invention Convention U.S. Nationals, held in Henry Ford Museum of American Innovation, featured nearly 500 young inventors, some from as far away as Singapore and Shanghai. From solar-powered rocket systems and insulin plungers to a smart handicapped parking sign and biodegradable plastic, K-12 students presented their ideations alongside some of the most iconic inventions in American history.

In total, the convention was a shining achievement under the auspices of The Innovation Project's mission to advance innovation, invention and entrepreneurship. And it is one The Henry Ford will continue to grow in scope and impact, thanks in large part to the support of donors and partnerships with companies such as **United Technologies Corporation (UTC)**, the convention's returning presenting sponsor in 2019.

"Partners like United Technologies understand how this kind of competition can inspire the next generation of doers, makers and creators as well as future entrepreneurs — the people

who are going to solve the problems we will face tomorrow," said Patricia E. Mooradian, president and CEO of The Henry Ford. "We are happy to be on this journey together to ensure invention education is a global movement and that we play our part in creating the next generation workforce."

Invention Convention U.S. Nationals is a cornerstone collaboration in UTC's decades-old investment in STEM-based invention education. "As a company based on invention, UTC is proud to be one of the founding sponsors of the Connecticut Invention Convention, which was the beginning of what is now the Invention Convention U.S. Nationals at The Henry Ford," said Mary Lombardo of UTC. "Being there from the start, it is very encouraging to see the significant strides The Henry Ford is making to grow the program. The discipline, capacity and expertise now dedicated to invention education and increasing the global reach of Invention Convention gives us great confidence, and we are proud to play a critical role in that work."

**DID YOU KNOW? /** The Henry Ford, along with Invention Convention U.S. Nationals sponsor and invention education partner The Lemelson Foundation, hosts the annual Invention Convention Worldwide Fall Affiliate Summit. Held at Henry Ford Museum of American Innovation, the summit brings together youth invention, innovation and entrepreneurship affiliate and partner program organizers to share best practices in an effort to further formalize invention and entrepreneurship education for K-12 students throughout the United States.



▲ Nearly 500 young inventors (above) took over the floor of Henry Ford Museum of American Innovation in June for the 2019 Invention Convention U.S. Nationals. At right: UTC's Jason Chua (left), Invention Convention award winner Vikram Anantha and The Henry Ford's Patricia Mooradian. Vikram, a seventh-grader from Massachusetts, won the UTC Most Innovative Award for his Automated Communication Companion, a device that teaches kids with nonverbal autism new words.

PHOTOS BY NICK HAGEN

"Invention Convention is a place where we celebrate the power of unique experiences and points of view. Where we can encourage young inventors to collaborate, stick with it and never underestimate themselves or their ability to change the world in their own special way!"

— Jason Chua, UTC's keynote speaker, 2019 Invention Convention U.S. Nationals

**INVENTION CONVENTION**  
U.S. NATIONALS



Presented by United Technologies





# Stories of Impact: Entrepreneurship

With your support, The Innovation Project is giving emerging and seasoned innovators a platform at The Henry Ford from which they can collaborate, learn and grow

*In 2019, The Henry Ford introduced the William Davidson Foundation Initiative for Entrepreneurship to explore learning platforms and leverage the assets of The Henry Ford. The Entrepreneur-in-Residence (EIR) Program, an integral part of this initiative, invites successful entrepreneurs to spend several months at The Henry Ford using its resources to create workshops, networking opportunities and youth learning experiences that will inspire the next generation to begin their own entrepreneurial journeys. Two residencies will be offered per year.*

“So many people motivated me to have the audacity to dream big.” That’s what farmer Melvin Parson, The Henry Ford’s first EIR, shared in closing his residency this summer. And it’s what Parson hopes he offered to the students, future entrepreneurs and upcoming growers he met and mentored during his time at The Henry Ford.

Parson’s overarching mission to reconnect people to the soil with his We the People Growers Association made him a standout choice as the inaugural EIR. His Ypsilanti farm not only engages surrounding communities and supplies vegetables to nearly a dozen restaurants but offers returning inmates a way back from incarceration through employment.

While in his residency, Parson was able to meet with Henry Ford Academy students to

discuss how food travels and was invited to interact and answer tough questions with future entrepreneurs during a roundtable co-hosted with celebrated social entrepreneur Lauren Bush Lauren (see sidebar below). He also coordinated a field trip to his Ypsilanti farm for the Detroit chapter of Jack and Jill of America, which strengthens African-American children through leadership development. “I wanted the kids to see someone that looks like them farming,” he said.

Still, the greatest legacy of Parson’s residency may be forthcoming: the pending revival of the Detroit Central Farmers Market, which The Henry Ford plans to erect in Greenfield Village (see Page 7). Parson’s insights have The Henry Ford’s team energized for the learning platforms this 19th-century piece of Detroit history could provide. In turn, the foodways program and historical practices shared with Parson as part of his own professional development will likely find new life on his land. “Some of the methods used back in the day, I would like to incorporate on my farm,” he said.

Added Parson about what he believes is now a lifelong partnership with The Henry Ford: “I did not know this was going to be so impactful. I’ll take this inspiration that’s been given to me and pass it forward.” From someone whose words seed progress, imagine what awaits.



▲ As part of his residency at The Henry Ford, agri-pioneer Melvin Parson (back row center in gray hat) invited the Detroit chapter of Jack and Jill of America, an organization which promotes leadership development for African-American youth, to his Ypsilanti farm to help cultivate the soil as well as minds about the art of farming.

PHOTO BY CODY RYAN MARTELL

## Empowering Ideas

Along with the launch of the Entrepreneur-in-Residence (EIR) Program, The Henry Ford hosted a speaker series in 2019 through the William Davidson Foundation Initiative for Entrepreneurship. Lauren Bush Lauren, founder of FEED Projects, a company fighting world hunger through the unlikely platform of fashion products, was the first speaker to come to The Henry Ford. Not only did she share her passion to eradicate world hunger with donors, members and guests at Henry Ford Museum of American Innovation, but she participated in an intimate student roundtable with EIR Melvin Parson and aspiring entrepreneurs from Ann Arbor’s Pathways to Success High School, Henry Ford Academy and other southeast Michigan hubs for innovation. Students spoke candidly with Lauren and Parson about entrepreneurship today, the importance of failure and the differences between social and traditional entrepreneurs.

“What differentiates social entrepreneurship from more traditional entrepreneurship? It’s about moving the world forward,” said Lauren. “You have to have the want and the will to make the world a better place. When I was a teenager, I struggled to figure out what I could do and how to do it. I want to empower young people to create their own path and their own way to give back and improve the world we live in. What The Henry Ford is doing, it’s amazing. To be spreading the awareness of social entrepreneurship, innovation and invention is just so inspiring.”



▲ Social entrepreneur Lauren Bush Lauren (left) and Melvin Parson.

PHOTO BY DOUG COOMBE

## GIVING TUESDAY

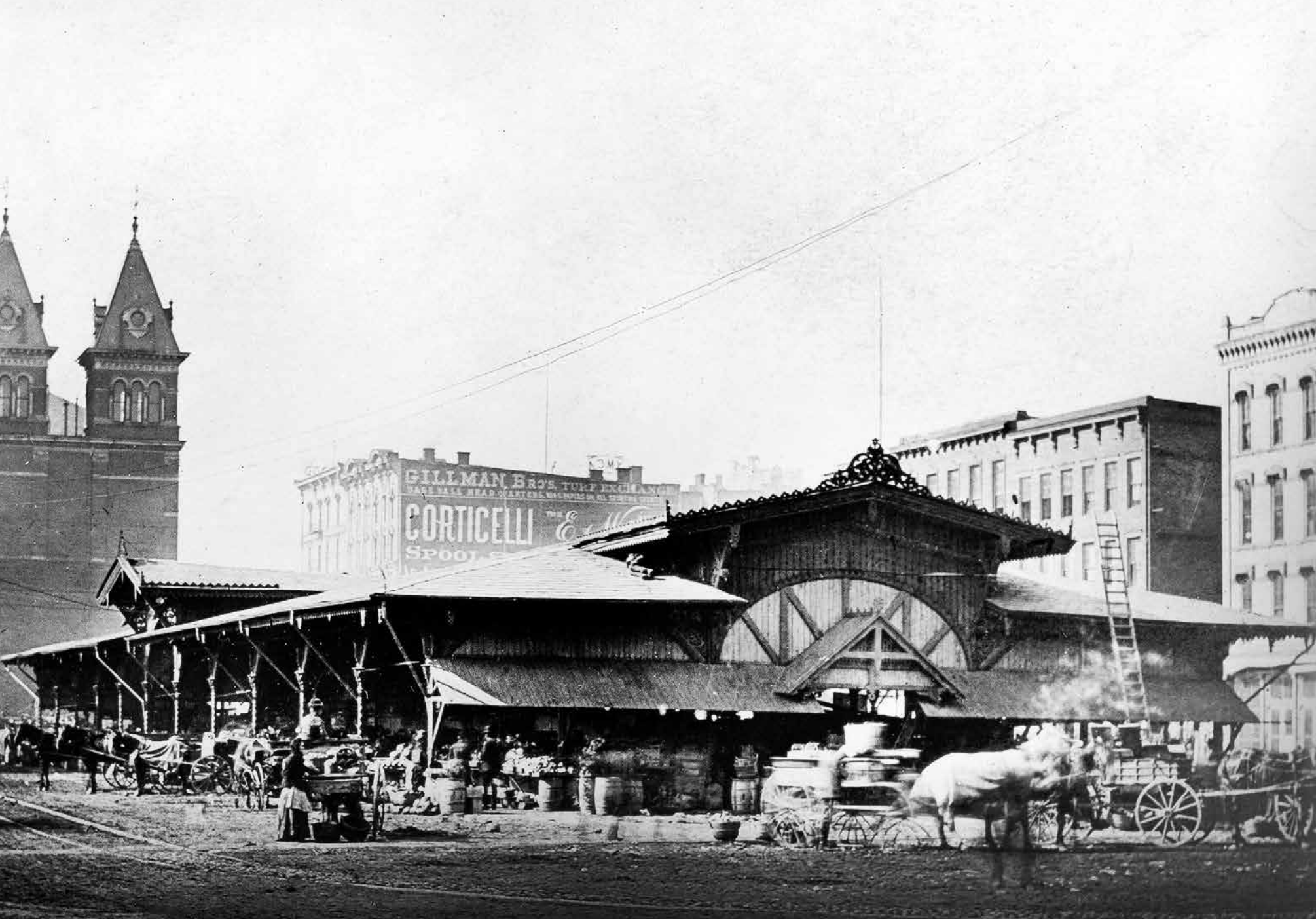
Giving Tuesday is December 3, 2019, a global day of giving. Thanks to Donald and Mary Kosch, longtime supporters of The Henry Ford, all donations received during Giving Tuesday will be matched dollar for dollar to bring the Detroit Central Farmers Market, one of the country’s oldest surviving urban farmers markets, to Greenfield Village.

Pledge your passion: Donate now, help The Henry Ford meet the challenge grant and give the Detroit Central Farmers Market a modern-day purpose in Greenfield Village as a new learning platform for the next generation to discover. [thf.org/givingtuesday](http://thf.org/givingtuesday)

► With your support, the Detroit Central Farmers Market will be erected in Greenfield Village at Washington and State streets, across from the Edison Illuminating Company and State Street Lunch Stand.







YOUR SUPPORT  
WILL MAKE  
HISTORY  
A REALITY

Detroit Central Farmers Market, c. 1885

# DETROIT CENTRAL FARMERS MARKET



**The Henry Ford has accepted a challenge grant to bring back to life one of the oldest surviving urban farmers markets in the country in Greenfield Village.**

**Help us reach this goal and #PledgeYourPassion today.**

This 1860 structure will be the hub of our growing commitment to sustainability and serve as a new agricultural learning platform in Greenfield Village. We need the support of donors with the vision and foresight to see that this remarkable structure can have new purposes as a place that will inspire people to explore and learn about food, farming, healthy eating and agricultural innovation — past, present and future.

**Make history and #PledgeYourPassion today to see the Detroit Central Farmers Market activated in Greenfield Village.**

**→ DONATE TODAY**

Visit [thf.org/givingtuesday](https://thf.org/givingtuesday) to make a gift or for more information on the ways you can support The Henry Ford.

All donations to the Detroit Central Farmers Market project will be matched dollar for dollar.



# Making a Difference

Two donors to The Henry Ford exemplify generosity, selflessness and a commitment to volunteerism

Like many of the donors and volunteers who support The Henry Ford, Kathy Levillier and Michael Choffnes share a love for helping others and spreading knowledge. What also makes their stories impactful is the sheer number of years and hours the two have spent and served in support of the educational mission of The Henry Ford. Both recently marked significant milestones and contributions in their charitable work.

### KATHY LEVILLIER

Pick an artifact or experience at The Henry Ford, and it's a good bet you've met Kathy Levillier. Passionate volunteer, member and generous donor, Levillier is as compelling discussing tintypes in Greenfield Village as she is showcasing the particulars of the museum's 1975 Sperry-New Holland Combine. She calls volunteering at The Henry Ford "invigorating" and openly shares her desire to help make the goals of The Innovation Project a reality. As proof, she calls out the 2019 Invention Convention U.S. Nationals, where hundreds of young innovators came to The Henry Ford to share their inventions. "It was a pleasure to see all that creativity," said Levillier. "The students were so enthusiastic, intelligent and hardworking. Maybe I met the next Henry Ford!"

A longtime racing fan, Levillier decided to use a charitable distribution from her IRA to support the completion of the new *Driven to Win: Racing in America* exhibition. "I love racing and have been a fan of drivers from Junior Johnson to Jimmie Johnson," said Levillier, who can't wait for the exhibit to open in 2020.

### MICHAEL CHOFFNES

Why would someone choose to regularly volunteer at The Henry Ford all the way from Chicago? "What I do really makes a difference," said Michael Choffnes, who has been making the trek from the Windy City twice monthly, sometimes more, for 20-plus years. The former Chicago Public Schools shop teacher first visited The Henry Ford on a business trip in 1992. His two-day ticket became an annual



**DID YOU KNOW? /** Michael Choffnes regularly volunteers with Greenfield Village's mechanics to keep the Model A's and Model T's in top form. At present, he is helping set up a shop to help maintain exhibited vehicles.

"I'm a donor because I want to play a part in the future The Henry Ford will create through The Innovation Project."

— Kathy Levillier



membership, which morphed into annual giving — and then some: Choffnes recently entered The Henry Ford's 20K Club marking 20,000 service hours, a distinction earned only once before. "I was honored and very surprised," said Choffnes of the special citation and celebratory clock he received in recognition of his service.

**DID YOU KNOW? /** Along with making a charitable distribution from an IRA, there are many other ways you can support The Henry Ford with a planned gift. Visit [thehenryfordlegacy.org](http://thehenryfordlegacy.org) or call Jeff Dunlap at 313.982.6167 for more information.

Want to volunteer? Visit [thf.org/about/employment/volunteering](http://thf.org/about/employment/volunteering) or call 313.982.6100, ext. 2651 or 2653, to find out how.

## The Henry Ford Operating Revenue

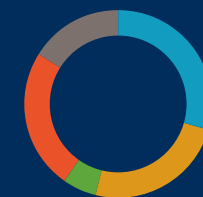
(in thousands)	2018	2017
ADMISSIONS	\$14,541	\$14,076
MEMBERSHIP	\$6,808	\$6,705
RESTAURANTS + CATERING	\$16,071	\$14,031
RETAIL	\$1,398	\$1,411
OTHER EARNED INCOME	\$9,927	\$9,418
GIFTS + CONTRIBUTIONS	\$4,154	\$4,399
INVESTMENT INCOME	\$17,380	\$16,547
OTHER	\$1,588	\$1,401
	<b>\$71,867</b>	<b>\$67,988</b>

## Operating Expenses

(in thousands)	2018 (unaudited)	2017
PROGRAM	\$60,703	\$55,059
ADMINISTRATIVE	\$7,517	\$8,321
DEVELOPMENT + MEMBERSHIP	\$2,614	\$2,894
	<b>\$70,834</b>	<b>\$66,274</b>
CAPITAL INVESTMENTS	\$950	\$1,478
SURPLUS (DEFICIT)	\$82	\$237

Fundraising expenses as a percentage of total revenue: 3.64%  
Fundraising + administration expenses as a percentage of total revenue: 14.10%

Total giving to The Henry Ford last year reached \$26.5 million, which includes gifts and contributions to the operations shown above.



### 2018 Operating Support + Revenue

PROGRAM REVENUE 29.7%  
RETAIL + FOOD SALES 24.3%  
GIFTS + CONTRIBUTIONS 5.8%  
INVESTMENT INCOME 24.2%  
OTHER 16.0%



### 2018 Operating Expenditures

PROGRAM 85.7%  
ADMINISTRATIVE 10.6%  
DEVELOPMENT + MEMBERSHIP 3.7%

# Thank you to our 2018 supporters.

We sincerely thank all of you, our donors and friends, for helping us grow and build on our mission to provide unique educational experiences based on authentic objects, stories and lives from America's traditions of ingenuity, resourcefulness and innovation.

The following pages recognize cumulative support as well as support from individuals, corporations and foundations received between January 1, 2018, and December 31, 2018.

If we have omitted a name or otherwise erred, please accept our apology and contact the Institutional Advancement Office at 313.982.6115.

**Want to add your name to the 2019 Honor Roll? Give today at [thf.org/support](http://thf.org/support).**

## THE INNOVATION PROJECT CAMPAIGN

THANK YOU TO OUR EARLY SUPPORTERS AS OF APRIL 2019

### \$5,000,000 and Above

William Davidson Foundation  
Ford Foundation  
Ford Motor Company  
Mr. and Mrs. William Clay Ford  
General Motors  
Ambassador and Mrs. Ronald N. Weiser (t)

### \$1,000,000-\$4,999,999

Anonymous (3)  
Lynn and Paul Alandt on behalf of the Benson & Edith Ford Fund (t)  
Shirley Damps (e)  
Delta Air Lines Foundation  
Mrs. Linda Dresner and Mr. Edward C. Levy, Jr.  
DTE Energy Foundation  
Cynthia and Edsel B. Ford II (t) on behalf of the Henry Ford II Fund  
Ford Motor Company Fund  
William Clay Ford, Jr. and Lisa V. Ford (t)  
Steven K. and Sheila Ford Hamp (t)  
Mort & Brigitte Harris Foundation  
Mr. and Mrs. Richard Jeryan  
The Khan Foundation  
Donald and Mary Kosch Foundation  
Lear Corporation  
Mr. and Mrs. Richard A. Manoogian (t)  
The Meijer Foundation  
Bruce Meyer Family (t)  
Penske Family  
Rolex Watch U.S.A., Inc.  
Roush Corporation  
Larry P. Turek  
Robert J. Turek  
Mr. and Mrs. S. Evan Weiner (t)

### \$500,000-\$999,999

Anonymous  
Mr. and Mrs. William W. Boeschstein  
Cynthia Brush  
Michael J. Choffnes  
CIBER, Inc./HTC Global Services  
Hewlett Packard Enterprise  
Institute of Museum and Library Services  
Michigan Economic Development Corporation  
Shell Oil Company

### \$100,000-\$499,999

Anonymous  
Mr. and Mrs. Gerard M. Anderson (t)  
Robert & Toni Bader Charitable Foundation  
Estates of David and Jane Barton  
Paul and Constance Dimond (t)  
Phillip and Lauren Fisher  
Emily and Henry Ford III (t)  
Mr. and Mrs. Ralph J. Gerson (t)  
Ambassador and Mrs. Yousif B. Ghafari

Patrick Hancock  
Mr. and Mrs. Richard Harkness  
Mary Ellen Hayes  
The William Randolph Hearst Foundations  
Hitachi America, Ltd.  
Mr. and Mrs. John W. Ingle III (t)  
Mr. Richard E. Johnson  
Mr. and Mrs. Charles P. Kontulis II (t)  
Joseph Lile  
Masco Corporation Foundation  
Michigan Council for Arts and Cultural Affairs  
Owens Corning Foundation  
Ms. Lisa A. Payne (t)  
PNC Bank Foundation  
Mr. and Mrs. Mark Reuss (t)  
United Technologies  
Alessandro and Kimm Uzielli (t)  
Mrs. Margaret E. Wade  
Mildred and Charles Webster

### \$25,000-\$99,999

Applebaum Family Compass Fund  
Aptiv Foundation  
Denis and Patricia Bork  
Clive Chapman  
Mr. and Mrs. Harley E. Cluxton III  
Community Foundation for Southeast Michigan  
Federal-Mogul Corporation  
Mr. and Mrs. Dario Franchitti  
George F. Francis III (t)  
Chip Ganassi  
Marcia Sue Gurecky  
Freda G. Johnson  
Richard E. Johnson  
Koch Industries  
Mr. Christopher Locke and Ms. Starr Kelton-Locke  
Alex MacAllister  
Mr. and Mrs. Chris MacAllister  
Magna International  
Patricia E. Mooradian (t) (e)  
Claudia J. Nickel  
Mrs. Judith H. Obermayer  
Hamilton Roddis Foundation  
Estate of Helen Antonia Talarek  
Mr. and Mrs. Hau Thai-Tang (t)  
Mr. James H. Voyles, Jr.  
Ms. Linda A. Wall

### \$10,000-\$24,999

Mr. and Mrs. William P. Baer  
Betty S. Chu and Navot Shores  
Eliza Kontulis Getz and Maxwell King Getz (t)  
Mr. Christopher F. Hamp and Dr. Nicole Hamp (t)  
Honigman Miller Schwartz and Cohn LLP  
Maine Community Foundation  
Mr. and Mrs. Raj Nair  
Mr. and Mrs. William I. Sikora

### \$5,000-\$9,999

Anonymous  
AK Steel

Bruce R. Bachmann  
Vanessa C. McCormick  
Tim and Diann Pendell  
Polk Bros. Foundation

### \$2,500-\$4,999

Andrew and Linda Dervan  
Rex A. Miller and Joan Miller  
Steve and Beth Schroeder  
Tru Vue, Inc.

### \$1,000-\$2,499

Anonymous (2)  
Ms. Sara Bostock and Mr. Peter Bostock  
Dr. and Mrs. Joseph Fontana  
William Clay Ford III (t)  
Mr. and Mrs. Paul G. Guaresimo  
Mrs. Andrea Kotch Duda and Mr. Walter Duda  
Sara Locricchio  
Sally B. Moore  
Duane and Sheila Tarnacki

### \$500-\$999

Complex Weavers  
Mr. and Mrs. James Ewing  
Greg Kaufman  
Michigan Weavers Guild  
Bernard and Janene Ringwelski

### \$250-\$499

Amateur Mendicant Society of Detroit  
Jon Crosthwaite  
Mr. and Mrs. James K. Doig  
Jeanine Head Miller (e)  
Mr. and Mrs. Clifford N. Montreuil  
Mr. and Mrs. William L. Romanski

### \$249 and Under

Anonymous (2)  
Ken Adams  
Mr. and Mrs. William Allen  
Mr. and Mrs. Gary Ambrus  
Katie and Dave Andrea  
Rosemary and John Austgen  
Steve & Droinda Balanecki  
Michael Bartels  
Mr. and Mrs. David Bauer  
Mr. and Mrs. Carl H. Baxter  
Colleen Bean  
Bill Benck  
Thomas Benedict  
Alison Benjamin  
Tim Brewer  
Ms. Alyce Brown and Mr. Thomas Smith  
Mr. John Brown and Ms. Wendy Morris  
Ms. Susan Brown and Mr. Craig Schnabel  
Michael and Jeanne Butman  
Mr. and Mrs. Kenneth H. Campbell  
James Carter  
Steven Cavalieri  
Terence Clark  
Mr. Scott M. Clippert  
Cross Borders  
Ellen T. Crowley

(t)=trustee (e)=employee

John P. Dainus  
 Henricus de Groot  
 Christine K. Del Greco  
 Mr. and Mrs. Douglas L. Denton  
 Mr. and Mrs. Robert G. Denyer  
 Judy A. Dever  
 Mr. Brian Devlin and Ms. Kay Kaminga  
 Nancy H. Duffy  
 Jeff Dunlap and Elizabeth Lindau (e)  
 Michael Eddy  
 Beverly Ellis  
 Ellice Engdahl (e)  
 Mr. and Mrs. David J. Esper  
 Frances Faile  
 Stanton T. Fitts  
 Ford Retired Executive Engineers  
 Robert D. Ford  
 Sharon L. Fredrick  
 Anne Marie Garman and John Kozma  
 Mr. and Mrs. Gerald J. Goodrich  
 Robert Grigevich  
 Mr. Michael Guzick and  
 Mrs. Gloria Bucciero-Guzick  
 Mary Hammer  
 Lestra Hazel  
 E. Theresa Henderson  
 Christopher Hohn  
 Warren Hopkins  
 Jean Hosford  
 Mr. and Mrs. David S. Howarth  
 Mr. and Mrs. Scott L. Hunter  
 Ann L. Iverson  
 Jennifer Jamson and Jim Clark  
 William Jeffrey  
 Carol Jerrahian Miller  
 Glenn Jewell  
 Nancy A. Jones  
 Mr. and Mrs. Paul C. Killgoar  
 Debra L. Kingsbury  
 Debra M. Kirby  
 Laura Klauser  
 Joan C. Koelsch  
 John F. Kramb  
 Mr. and Mrs. John G. LaFond  
 Eric Laine  
 Kaye Larkin  
 Ann Larson  
 John H. Lee  
 Leslie Littell  
 Mr. and Mrs. Chris J. Longstreth  
 Mr. and Mrs. Charles R. Longueuil  
 Molly MacDonald  
 Sandra MacDonald  
 Robert Mahin  
 Michael Marlin  
 Daniel Martinez  
 Robert McCune  
 Kathleen G. McDonald  
 J. Spencer & Gini Medford (e)  
 Ms. Nadine Merriman  
 Metamora Green Assoc.  
 Gordy Michael (e)  
 George P. Miller  
 Mr. Leslie A. and Mrs. Cynthia R. Miller  
 Richard J. Miller  
 Rick Monk  
 Jennifer Moody (e)  
 Mr. and Mrs. David Moore

Mr. and Mrs. Douglas T. Moore  
 Mr. and Mrs. Stuart G. Moyer  
 Mr. Mike Mulcahy  
 Mr. and Mrs. Robert Musial  
 Mr. and Mrs. Thomas A. Musselman  
 Filomena Napolitano (e)  
 Needles, Hooks and Heddles  
 Mr. and Mrs. Russell D. Newhouse  
 Mr. and Mrs. Bruce Niemi  
 Marcy Oehler  
 Mr. James W. O'Keefe  
 Oxford Physical Therapy  
 Jeani A. Park  
 Mr. and Mrs. George E. Peck  
 Mr. and Mrs. Roy E. Pilot  
 Pixel Grafix Studio LLC.  
 Martha Pleiss  
 Mrs. Nancy Poettinger  
 Mr. Andrew L. Price  
 Anneliese Pruett  
 Family of Lou Ratsos  
 Mary Lou Reichard  
 Mr. and Mrs. Frederic H. Roth, Jr.  
 Rita Runchock  
 Mr. Paul Sant  
 Henry Schaefer  
 Mr. and Mrs. Randal Schuck  
 Jan Sheely  
 Dr. Andrew Sherman  
 Bill Simmeth  
 Mr. and Mrs. Luis A. Sisneros  
 Brian J. Smolen  
 Dr. Edward F. Stein  
 Joy Stimac  
 Robert Tar  
 Robert W. Tarpey  
 Denise Thal and David Scobey  
 Ms. Teresa Thomson  
 Mr. and Mrs. Michael J. Tomkins  
 Martha Town  
 Bridget Travers  
 Mr. and Mrs. Thomas N. Twomey  
 Mr. and Mrs. John C. Valentine  
 Mr. Gerald Varitek and Mr. Daniel Varitek  
 Mr. and Mrs. Robert J. Viazanko  
 Steven Vozella  
 Larry Watson  
 Edward Wenzel  
 Mr. and Mrs. Pierre A. Willermet  
 Marta G. Williams  
 Mr. and Mrs. Ron Wlosinski  
 Mr. and Mrs. Mark D. Zagar  
 Dr. and Mrs. Douglas Zakolski

**CUMULATIVE SUPPORT**

**\$5,000,000 and Above**

Lynn and Paul Alandt (t) on behalf of the Benson & Edith Ford Fund  
 William Davidson Foundation  
 Harvey Firestone, Jr. Foundation  
 Benson Ford, Jr.  
 Cynthia and Edsel B. Ford II (t) on behalf of the Henry Ford II Fund

Mr. and Mrs. Edsel B. Ford  
 Henry and Clara Bryant Ford  
 Ford Foundation  
 Ford Motor Company  
 Ford Motor Company Fund  
 Mrs. Walter B. Ford II  
 Mr. and Mrs. William Clay Ford  
 William Clay Ford, Jr. and Lisa V. Ford (t)  
 General Motors  
 Steven K. and Sheila Ford Hamp (t)  
 The Kresge Foundation  
 Michigan Council for Arts and Cultural Affairs  
 National Endowment for the Humanities  
 State of Michigan  
 Ambassador and Mrs. Ronald N. Weiser (t)

**\$1,000,000-\$4,999,999**

Anonymous (5)  
 The Anderson Fund  
 Bank of America  
 Blue Cross Blue Shield of Michigan  
 Mr. Ralph H. Booth II  
 Mr. Michael J. Choffnes  
 Cisco Systems, Inc.  
 Community Foundation for Southeast Michigan  
 Shirley Damps (e)  
 Delta Air Lines  
 Delta Air Lines Foundation  
 Mrs. Linda Dresner and Mr. Edward C. Levy, Jr.  
 DTE Energy Foundation  
 Fred A. and Barbara M. Erb Family Foundation  
 Eleanor & Edsel Ford Fund  
 Ford Motor Company Archives  
 Herrick Foundation  
 Hudson-Webber Foundation  
 Institute of Museum and Library Services  
 ITC Holdings Corp.  
 Mr. and Mrs. Richard Jeryan  
 The Khan Foundation  
 John S. and James L. Knight Foundation  
 Mr. and Mrs. Charles P. Kontulis II (t)  
 Donald and Mary Kosch Foundation  
 Lear Corporation  
 Mr. and Mrs. Richard A. Manoogian (t)  
 Masco Corporation Foundation  
 McGregor Fund  
 Meijer  
 The Meijer Foundation  
 Bruce Meyer Family (t)  
 Microsoft Corporation  
 Northwest Airlines  
 Roger S. Penske  
 Rolex Watch U.S.A., Inc.  
 Roush Corporation  
 SBC Michigan  
 The Elizabeth, Allan and Warren Shelden Fund  
 Siemens Product Lifestyle Management Software  
 Silicon Valley Community Foundation  
 The Skillman Foundation  
 Target  
 Larry P. Turek  
 Robert J. Turek  
 Unisys Corporation  
 U.S. Department of Transportation and the Michigan Department of Transportation  
 Mr. and Mrs. S. Evan Weiner (t)  
 Matilda R. Wilson Fund  
 World Heritage Foundation/The Prechter Fund

**\$500,000-\$999,999**

AAA Michigan  
 AT&T  
 Mr. and Mrs. William W. Boeschstein  
 Carleton W. Brown  
 Cynthia B. Brush  
 Ford R. Bryan  
 Comerica Bank  
 Mr. Richard Cook  
 Mr. and Mrs. David T. Fischer  
 Walter & Josephine Ford Fund  
 Mr. William H. Gates III  
 Mary Ellen Hayes  
 Hewlett Packard Enterprise  
 Macy's  
 Michigan Economic Development Corporation  
 Mr. and Mrs. Peter C. Morse  
 Owens Corning Foundation  
 Shell Oil Company  
 Mr. and Mrs. A. Alfred Taubman  
 The Harry A. and Margaret D. Towsley Foundation  
 U.S. Department of Education  
 Whitney Fund

**\$100,000-\$499,999**

Anonymous (5)  
 ACDelco  
 Mr. and Mrs. Alan T. Ackerman  
 Alberici Constructors, Inc.  
 Alberici Foundation  
 The Alix Foundation  
 Maggie & Bob Allesee  
 The Americana Foundation  
 American Automobile Centennial Commission  
 Mr. and Mrs. Gerard M. Anderson (t)  
 Richard and Susan Anderson  
 ANR Pipeline Company  
 Association of Science-Technology Centers  
 Aptiv Foundation  
 Aristeo Construction Co.  
 The Auto Club Group  
 AutoNation, Inc.  
 Robert & Toni Bader Charitable Foundation  
 Estates of David and Jane Barton  
 BASF Corporation  
 Bauervic-Paisley Foundation  
 Beaumont Health  
 Big Boy Restaurants International LLC  
 Bob and Susie Bluestein  
 Estate of Frederick Bonacker, Jr.  
 Borman's, Inc.  
 Bridgestone/Firestone Americas Tire Operations  
 The Brinker Group  
 The Fred and Margaret Brusher Family Collection  
 Buddy's Pizza  
 Mary Lou Burke  
 Chase  
 Cheli's Chili Bar  
 Chrysler Corporation Fund  
 CIBER, Inc.  
 Citizens Bank  
 City of Dearborn  
 Henry Austin and Waleta Clark  
 Comcast  
 Dana Corporation  
 Ms. Joanne Danto & Mr. Arnie Weingarden  
 Marvin and Betty Danto Family Foundation

Dearborn DDAs  
 Delphi Corporation  
 DENSO International America, Inc.  
 Detroit Lions  
 Detroit Metro Convention & Visitors Bureau  
 Detroit Regional Chamber  
 DFCU Financial  
 Paul and Constance Dimond (t)  
 DTE Energy Company  
 Edward C. Levy Co.  
 Exhibit Works, Inc.  
 explore.org, a direct charitable activity of the "Annenberg Foundation"  
 FabriSteel Holdings Inc.  
 Mr. and Mrs. James D. Farley, Jr.  
 Faye Sarofim & Co.  
 Phillip and Lauren Fisher  
 Mrs. Anne Ford  
 Mrs. Charlotte M. Ford  
 Emily and Henry Ford III (t)  
 Walter and Roxanne Ford  
 Dean and Aviva Friedman/Real Integrated  
 GE Foundation  
 General Electric Company  
 General Motors Foundation  
 Mr. and Mrs. Ralph J. Gerson (t)  
 The Ghafari Companies  
 Ambassador and Mrs. Yousif B. Ghafari  
 The Gilmour-Jirgens Fund  
 The Goodyear Tire & Rubber Company  
 The Gordy Company  
 Guardian Industries Corp.  
 Mr. Patrick Hancock  
 Mr. and Mrs. Richard Harkness  
 Mort & Brigitte Harris Foundation  
 The William Randolph Hearst Foundations  
 Herman Miller, Inc.  
 Mr. and Mrs. Kenneth Herrick  
 Hitachi America, Ltd.  
 Mr. and Mrs. John W. Ingle III (t)  
 IUOE Local 324  
 Mr. Richard E. Johnson  
 William Kelly Trust  
 Kmart Corporation  
 Richard and Linda Kughn  
 A. F. LaBarge  
 Mr. Joseph Lile  
 Estate of Lillian I. MacLean  
 Oliver Dewey Marcks Foundation  
 John W. Mazzola  
 McKinley Associates, Inc.  
 Meritor  
 MetroPCS  
 Michigan Laborers - Employers Cooperation & Education Trust Funds; Laborers Local 1076 LECET, Laborers Local 1191 LECET, Laborers Local 334 LECET, Michigan LECET  
 Microsoft Corporation  
 Patricia E. Mooradian (t) (e)  
 National Association of Manufacturers  
 National City Bank of Michigan/Illinois  
 New Economy Initiative for Southeast Michigan  
 Nortel Network  
 The Northern Trust  
 Ms. Lisa A. Payne (t)  
 PepsiCo Foodservice  
 PizzaPapalis  
 PNC Bank  
 PNC Bank Foundation

Popular Mechanics  
 Premier Auto Group  
 PricewaterhouseCoopers LLP  
 PRIMECAP Management Company  
 Mr. and Mrs. Mark Reuss (t)  
 R. H. Bluestein & Co.  
 Kathleen R. Simmons  
 Governor and Mrs. Richard D. Snyder  
 Mr. and Mrs. R. Thomas Snyder  
 Team Detroit  
 TIAA-CREF Tuition Financing  
 Tower Automotive  
 Toyota Motor Sales, USA, Inc.  
 USDA Forest Service  
 U.S. Department of Housing and Urban Development  
 Alessandro and Kimm Uzielli (t)  
 Verizon Wireless  
 Village Antiques Show  
 Visteon Corporation  
 Colonel John von Batchelder  
 Wade-Trim  
 Gerard & Luanne Waldecker  
 Wayne County  
 Mildred and Charles Webster  
 WFD  
 Mrs. Richard E. Williams  
 Dorothy Zink Estate Trust

**\$50,000-\$99,999**

Anonymous (5)  
 AARP  
 Albert Kahn Associates, Inc.  
 American Truck Foundation  
 Amtrak National Railroad Passenger Corp.  
 Jon E. Barfield & Vivian Carpenter  
 Bartech Group  
 Barton Malow Company Foundation  
 Bonhams & Butterfields  
 Booth American Company  
 Mr. and Mrs. Paul Borman  
 Mr. and Mrs. Stuart Borman  
 Philip & Betsey C. Caldwell Foundation  
 Thomas H. Cobb  
 The Coca-Cola Company  
 The Colina Foundation  
 Construction Association of Michigan  
 Mr. and Mrs. Peter D. Cummings  
 Dearborn Federal Savings Bank  
 Detroit Muscle  
 EY  
 Fetzer Institute  
 Barbara and Alfred J. Fisher III  
 Ms. Elena A. Ford  
 George F. Francis III (t)  
 Ruth R. Glancy  
 Gleaner Life Insurance Society  
 Goldman Sachs & Company  
 Grunwell-Cashero Co., Inc.  
 Marcia Sue Gurecky  
 Charles V. Hagler  
 Hamon Custodis, Inc.  
 Mrs. Henry C. Hansen  
 Patricia Heftler  
 Holiday Inn/Detroit-Dearborn  
 J. J. Humberstone  
 Intel Corporation  
 Jewish Federation of Metro Detroit



Johnson Controls Foundation  
 Kaufman Memorial Trust  
 W. K. Kellogg Foundation  
 Koc Holding  
 Mr. and Mrs. Peter T. Kross  
 Kuka Flexible Production Systems  
 Amy LaBarge and Ronald Beeber  
 The Mannik & Smith Group Inc.  
 M/B Foundation  
 Mercedes-Benz of North America  
 Michigan Department of Career Development  
 Michigan Farm Bureau  
 Michigan Humanities Council  
 W. Clark Miller  
 MITA  
 Motown Record Company, LP  
 Michelle and Linden Nelson  
 Mrs. Judith H. Obermayer  
 Mr. and Mrs. James J. Padilla  
 Panera Bread, LLC  
 Perich + Partners Ltd.  
 The Karen & Drew Peslar Foundation  
 Donald E. & Jo Anne Petersen Foundation  
 Ramco Gershenson  
 Milton M. Ratner Foundation  
 Richard E. and Patricia L. Robertson  
 Hamilton Roddis Foundation  
 Royal Roofing Co., Inc.  
 Mr. Chris J. Rufer  
 Ms. Eleanor B. Safford  
 Ralph E. and Irene Saleski  
 Edwina M. Simpson  
 Sotheby's  
 Stone Foundation of Michigan  
 Strategic Staffing Solutions  
 Mr. and Mrs. John M. Sullivan, Jr.  
 Sumitomo Corporation of America  
 Texaco Philanthropic  
 Mr. and Mrs. Hau Thai-Tang (t)  
 ThyssenKrupp Budd Co.  
 TRW Foundation  
 Union Pacific Corporation  
 Mrs. Barbara Van Dusen  
 Mr. and Mrs. Gail L. Warden  
 WH Canon, Inc.  
 Karen Wilson-Smithbauer  
 Young Woman's Home Association

## 2018 DONORS

### \$1,000,000 and Above

Lynn and Paul Alandt (t)  
 on behalf of the Benson & Edith Ford Fund  
 General Motors

### \$100,000-\$999,999

Bank of America  
 Estates of David and Jane Barton  
 William Davidson Foundation  
 Delta Air Lines  
 Delta Air Lines Foundation  
 Mrs. Linda Dresner and Mr. Edward Levy  
 DTE Energy Foundation  
 Fred A. and Barbara M. Erb Family Foundation  
 Cynthia and Edsel B. Ford II (t)  
 on behalf of the Henry Ford II Fund  
 Ford Foundation  
 Mrs. Martha Firestone Ford  
 Ford Motor Company

Ford Motor Company Archives  
 Ford Motor Company Fund  
 William Clay Ford, Jr. and Lisa V. Ford (t)  
 William Randolph Hearst Foundations  
 Institute of Museum and Library Services  
 The Khan Foundation  
 Donald and Mary Kosch Foundation  
 Mr. and Mrs. Richard A. Manoogian (t)  
 Masco Corporation Foundation  
 The Meijer Foundation  
 Michigan Council for Arts and Cultural Affairs  
 Michigan Economic Development Corporation  
 Roger S. Penske  
 PNC Bank  
 Rolex Watch U.S.A., Inc.  
 United Way of Washtenaw County  
 Ambassador and Mrs. Ronald N. Weiser (t)

### \$25,000-\$99,999

Mr. and Mrs. Gerard M. Anderson (t)  
 Richard and Susan Anderson  
 The Auto Club Group  
 Beaumont Health  
 Buddy's Pizza  
 Mr. Michael J. Choffnes  
 Citizens Bank  
 Community Foundation for Southeast Michigan  
 Ms. Joanne Danto & Mr. Arnie Weingarden  
 Marvin and Betty Danto Family Foundation  
 DFCU Financial  
 Emily and Henry Ford III (t)  
 General Electric Company  
 Ambassador and Mrs. Yousif B. Ghafari  
 Mary Ellen Hayes  
 Mr. and Mrs. John W. Ingle III (t)  
 Mr. and Mrs. Charles P. Kontulis II (t)  
 The Kresge Foundation  
 Macy's  
 Meijer Corporation  
 National Endowment for the Humanities  
 Owens Corning Foundation  
 PepsiCo Food Service  
 Mr. and Mrs. Mark Reuss (t)  
 The Elizabeth, Allan and Warren Shelden Fund  
 Stone Foundation of Michigan  
 Estate of Helen Antonia Talarek  
 Mildred and Charles Webster  
 Mr. and Mrs. S. Evan Weiner (t)  
 Matilda R. Wilson Fund

### \$10,000-\$24,999

Anonymous (5)  
 Mr. and Mrs. William P. Baer  
 Drs. John & Janice Bernick  
 Betty S. Chu and Navot Shores  
 James and Katherine Clark  
 Dearborn DDAs  
 Dearborn Rotary Foundation  
 Detroit Lions  
 Detroit Metro Convention & Visitors Bureau  
 Paul and Constance Dimond (t)  
 Mrs. Anne Ford  
 Mr. and Mrs. Ralph J. Gerson (t)  
 Mrs. Regina Goodwin  
 Steven K. and Sheila Ford Hamp (t)  
 Mr. Lee Hart and Mr. Charles Dunlap  
 Mr. and Mrs. William W. Helman  
 Herman Miller, Inc.

Mrs. Christine B. Jeryan  
 Mr. and Mrs. William Leatherman  
 Joseph Lile  
 Maine Community Foundation  
 Oliver Dewey Marcks Foundation  
 Hendrik Meijer (t)  
 Michigan Department of Transportation  
 Patricia E. Mooradian (t) (e)  
 Mr. and Mrs. Peter C. Morse  
 National Philanthropic Trust  
 Ms. Lisa A. Payne (t)  
 PNC Bank Foundation  
 Richard E. and Patricia L. Robertson  
 Hamilton Roddis Foundation  
 Kristina and Aaron Sikora  
 Simons Michelson Zieve Inc. Advertising  
 Mr. and Mrs. Hau Thai-Tang (t)  
 USDA Forest Service  
 Alessandro and Kimm Uzielli (t)  
 Gerard & Luanne Waldecker

### \$5,000-\$9,999

Anonymous  
 Mr. Floyd E. Alberts  
 American Axle  
 Aptiv Foundation  
 Barton Malow Company  
 The Boeschstein Family Foundation  
 BorgWarner Inc.  
 Ambassador and Mrs. Stephen F. Brauer  
 Karen Colina Wilson Foundation  
 Comerica Charitable Foundation  
 Keith and Mary Kay Crain  
 Shirley Damps (e)  
 Ray and Deborah Day  
 DENSO International America, Inc.  
 John and Debbie Erb  
 Goldfish Swim School  
 Gordon Food Service  
 Patricia Heftler  
 Mr. and Mrs. Carl Hobson  
 Kettering University  
 Mr. Philip Kintzele and Ms. Mary Irwin  
 littleBits Electronics  
 Mr. William Luke  
 Larry and Cindy Morawa  
 Claudia J. Nickel  
 The Karen & Drew Peslar Foundation  
 Ms. Waltraud E. Prechter  
 PRUSA  
 Ramco Gershenson  
 John and Marilyn Rintamaki  
 Rockwell International Corporation Trust  
 Mr. Chris J. Rufer  
 Mr. Greg Salustro  
 Mr. Vincent F. Scarafino  
 Nancy Schlichting & Pam Theisen  
 SME  
 University of Michigan-Dearborn  
 Mr. James H. Voyles, Jr.  
 Brett and Kimberly Warstler  
 Mr. and Mrs. Harold Wendelken  
 Mr. Mark Wilkie  
 Karen Wilson-Smithbauer  
 Ms. Alicia Winget  
 World Heritage Foundation/The Prechter Fund

### \$2,500-\$4,999

Anonymous  
 Altair Engineering  
 Ameriprise Financial  
 Katie and Dave Andrea  
 Cathy and Bob Anthony  
 Aristeo Construction Co.  
 James and Barbara Armiak  
 AutoLiv  
 Mr. and Mrs. Gary W. Bartlett  
 BASF Corporation  
 Mrs. Carolyn Benitez and Ms. Beth Wrona  
 Bolt IoT (aka Inventrom Private Limited)  
 Donald R. and Rosemary Brasie  
 Mr. Bruce W. Bryan  
 John and Pamela Busch  
 Mr. Christopher Callan  
 Clark Hill PLC  
 Ms. Jessica Conway  
 Gorman and Bruni Culver  
 Mr. John S. Daniel  
 Domino's Pizza, Inc.  
 Sarah and Tony Earley  
 The Gilmour-Jirgens Fund  
 Mr. and Mrs. D. Dale Greer  
 Hitachi America, Ltd.  
 James and Lynelle Holden Fund  
 Mr. and Mrs. Paul Holzschuher  
 Honigman Miller Schwartz and Cohn LLP  
 Mrs. Catherine A. Hudak  
 J.S. Clark Agency, Inc.  
 K12 Management Inc.  
 Carol Kendra and Erica Zazo (e)  
 Ms. Susan Kornfield  
 Mr. and Mrs. Ronald N. Kudra  
 Kuka Flexible Production Systems  
 Dr. Raymond Landes and Dr. Melissa McBrien  
 Lear Corporation  
 Lance and Rita Leonelli  
 Mr. Theodore Maged  
 Mr. and Mrs. Chris Mannino  
 Ms. Sheri Mark and Dr. Abe Slaim  
 Mrs. Donna K. McLaughlin-Shuereb  
 Mr. Jerome C. McManus  
 J. Spencer & Gini Medford (e)  
 Mr. Rex A. Miller & Mrs. Joan Miller  
 Jim and Carol Moore  
 MTU America, Inc.  
 Mr. and Mrs. Bruce Nabozny  
 Mr. and Mrs. James B. Nicholson  
 NSF International  
 Oakland University  
 Ms. Nancy O'Dell and Mr. Gary Shawgo  
 Dr. Gilbert Omenn and Ms. Martha Darling  
 Brent Ott (e)  
 Mr. John B. Pellegrino, Jr.  
 Pentastar Aviation, LLC  
 Timothy and Margaret Price  
 PSCU  
 Mr. and Mrs. Carl A. Schiele  
 The Seattle Foundation  
 Seco Tools Inc.  
 Mr. and Mrs. R. Thomas Snyder  
 Sysco Food Services of Detroit L.L.C.  
 Duane and Sheila Tarnacki  
 Bradley L. and Simone Himbeault Taylor  
 Mrs. Barbara Van Dusen

Village Ford, Inc.  
 Mr. and Mrs. Brian Welch  
 Joe and Cathy Wolford (e)  
 Young Woman's Home Association  
 Zeal Credit Union

### \$1,000-\$2,499

Anonymous (7)  
 A & K Research  
 Acro Service Corporation  
 Jennifer Adderley  
 Alfonsi Railroad Construction  
 Alumni Association of the University of Michigan  
 David and Beverly Androvich  
 Mr. William Arcy and Mrs. Shirley Arcy  
 Mr. Roger D. Arnett  
 Mr. and Mrs. Ernest Aughenbaugh  
 Baker College  
 Mr. Richard A. Barston  
 Mr. and Mrs. Alan W. Beery  
 Mr. and Mrs. Howard G. Behr  
 Benefit Outsourcing Solutions, Inc.  
 Ms. Sharon Bledsoe  
 Ms. Tracy A. Boos  
 Ms. Nadia Boreiko  
 Mr. and Mrs. John Boris  
 Denis and Patricia Bork  
 Brandt Street Properties  
 Mr. and Mrs. Richard P. Burns  
 The James and Mary Anne Cameron Foundation  
 Capuchin Ministries  
 Carhartt, Inc.  
 Mr. and Mrs. John D. Carlson, Jr.  
 Mrs. Carolyn Carr  
 George and Dolores Cassar  
 Mr. and Mrs. Jason Castelli  
 C. F. Burger Creamery  
 Mr. and Mrs. John N. Chudyk  
 Citizens Insurance  
 John and Nancy Colina  
 Comfort Keepers of Plymouth  
 Community Foundation for Oceana County  
 Tom, Gail, and Sabrina Costello  
 Mr. and Mrs. Karl Couyoumjian  
 Mr. and Ms. Chuck Covington  
 Danny and Amy Cox (e)  
 Mr. and Mrs. Leland Cross  
 Kevin Cubberly (e)  
 Christian and Elise Cullen (e)  
 Mr. and Mrs. Richard M. Cundiff  
 Betsy Cushman  
 Ms. Suzanne Dalton and Mr. Clyde Foles  
 Ms. Catherine A. Davy  
 Dearborn Federal Savings Bank  
 Mr. and Mrs. Leonard J. Decker  
 Mr. and Mrs. Stuart deGeus  
 Andrew and Linda Dervan  
 Mr. John E. DeWitt  
 Mr. Claude Dillard  
 Reggie and Deb DiRezze  
 Mr. David Doettl  
 John and Eleanor Dolega  
 Downriver Community Federal Credit Union  
 DTE River Rouge Power Plant  
 DTE Trenton Power Plant  
 Jeff Dunlap and Elizabeth Lindau (e)  
 Lillian and Joseph Durecki  
 Richard and Carol Durling  
 Mr. and Mrs. David T. Eagle  
 Mr. and Mrs. William G. Ellis  
 E.W. Grobbel Sons, Inc.  
 Mr. and Mrs. Dietmar Exler  
 Dr. Eva Feldman and Dr. Neal Little  
 Barbara and Alfred J. Fisher III  
 Michael and Barbara Fitzpatrick  
 Mr. Albert B. Ford  
 William Clay Ford III (t)  
 Gerry and Laura Fournier  
 Susan and Henry Fradkin  
 George F. Francis III (t)  
 Peter and Elizabeth Gaecke  
 Eugene and Mary Anne Gargaro  
 Greg and Karen Garr  
 Mr. and Ms. Gregg Garrett  
 Eliza Kontulis Getz (t)  
 Mrs. Marsha Greco and Mr. Aldo Greco  
 Mr. and Mrs. Kevin I. Green  
 Grunwell-Cashero Co., Inc.  
 Mr. Christopher F. Hamp and Dr. Nicole Hamp (t)  
 Mr. Michael F. Hamp  
 Mr. Peter K. Hamp and Dr. Leela Hamp  
 Mr. and Mrs. Rick Hamrick, Jr.  
 Randall and Janice Harvey  
 Susan and William Harvey  
 Mr. Bomi Hathikhanavala  
 Joanie and Terry Helgesen  
 Hella Corporate Center USA  
 HelloWorld  
 David and Cynthia Hempstead  
 Henry Ford Village  
 Henry Ford Village Wellness Center  
 Thomas and Lois Hill  
 Mr. and Mrs. Paul C. Hillegonds  
 Mr. and Mrs. Steve Hilliard  
 Mr. Dennis G. Hines  
 Mr. Robert J. Hitchens  
 Mrs. Mary Hlavaty  
 Mr. Ricky Hodge  
 Dr. Jean M. Holland  
 Benjamin and Sherri Howes (e)  
 IBM International Foundation  
 The Ideal Group  
 Ira and Brenda Jaffe  
 Ms. Christine Jakubowski and Mr. James Yates, Jr.  
 John and Tresa Jex, Jr.  
 Mr. Charles Karbginsky  
 Mr. and Mrs. Fred Kaufmann  
 Jill and Steven Kayner  
 Kelly Services  
 Mrs. Carol Kilway  
 Dr. Joseph Kingsbury and Ms. Denise Aho  
 Mr. Michael Kipley  
 Ms. Emily Kluz  
 KPMG  
 Mr. Jack Krasula  
 Mr. and Mrs. Frederick Krupic  
 Brian A. Kutscher  
 Amy LaBarge and Ronald Beeber  
 Mr. and Mrs. Richard W. Lambrecht, Jr.  
 Patricia and J. Michael Landrum  
 Laura and Kevin Laws (e)  
 Mr. and Mrs. Brian Leary  
 Mr. Mark Lebioda and Ms. Janet Yeager  
 Lee Ind. Contracting  
 Mr. Allan Leonard



**2018 DONORS / \$1,000-\$2,499 (CONTINUED)**

Charles and Kathleen Letts  
 Ms. Kathleen Levillier  
 Mr. and Mrs. Jerry Lewis  
 Dr. and Mrs. Chris P. Liakonis  
 Life Bridge Church  
 Lisa and Hannan Lis  
 Carol Little & James Stephen  
 LOC Federal Credit Union  
 Mr. Christopher Locke and Ms. Starr Kelton-Locke  
 Mr. and Mrs. Malcolm Macdonald  
 Madonna University  
 Michael and Alice Maher  
 Mr. and Mrs. Ben C. Maibach III  
 Mr. and Mrs. John E. Malloure  
 Marathon Petroleum Co.  
 Christopher and Shannon Marold  
 Mr. David Marold and Ms. Sheila York  
 Ms. Monica Martinez and Mr. Chris Gillett  
 Mr. Howard L. Mason  
 Mr. and Mrs. George McCann  
 Mr. and Mrs. James McCord  
 Mrs. Mary McLean Wilson  
 Wendy and Gary Meyer (e)  
 Michigan Credit Union League  
 Michigan First Credit Union - Lathrup Village  
 Michigan Surgery Specialists  
 Mr. William Milam  
 Dr. Robert Miller and Dr. Mary Jo Miller  
 Mr. and Mrs. Roger Miller  
 Mr. and Mrs. Robert Milligan  
 Jerry & Karen Mitchell  
 Patricia and Byron Moitozo (e)  
 David and Sally Montera  
 Kathleen Moore and Roger Faust  
 The Moroz Boyz (e)  
 Ms. Betsy Mosher  
 John and Julie Neilson (e)  
 Mrs. Martha Ann Ottolini  
 Mr. and Mrs. John Ozdych  
 Peake Recovery, Inc.  
 Dennis Pedersen, Cody Williams,  
 Chris Edelbrock, and David Stinchi  
 Peter Basso Associates, Inc.  
 Mr. and Mrs. Daniel L. Peterson  
 Peterson Spring  
 Mr. Michael Pickel and Mr. Buster Lester  
 Plante Moran  
 Christina & Thomas Posler (e)  
 Mr. and Mrs. Anthony J. Powers  
 Mr. Michael Powers  
 Printwell Printing Company  
 Real Integrated  
 Mr. and Mrs. Rex C. Reeve  
 Mr. and Mrs. Stephen L. Retherford  
 CW3 (R) Joseph Rheaume and  
 Mrs. Janet Rheaume  
 Mr. Frank Richards and Ms. Chin-Chan Chu  
 Bernard and Janene Ringwelski  
 Patrice and William Robertie  
 Mr. and Mrs. William L. Romanski  
 Mr. Philip Ross  
 Mr. and Mrs. Peter F. Salamon, Jr.  
 Mr. and Mrs. Gary Salisbury  
 Dr. and Mrs. Krishna K. Sawhney  
 Mr. and Mrs. Martin Schatz  
 Mr. John H. Scheich  
 Ms. Kimberly A. Scherer  
 Mr. and Mrs. Carl W. Shimbo

Ms. Corinne Shoop  
 Edwina M. Simpson  
 Mr. Layle Smith  
 Ms. Mary E. Smith  
 Mr. and Mrs. Darryl J. Snabes  
 Rebecca Sue South  
 Mrs. Earline W. Springer  
 Starting Point  
 Ms. Beth Stewart and Ms. Nan Washburn  
 Lora L. Stitman  
 Douglas and Glenn Stockdale  
 Mr. Kevin Sudak and Ms. Sylvia Cousino  
 Sumitomo Corporation of America  
 Drs. Robert and Kathleen Swarts  
 Mr. Walter Szymanski  
 Mr. Geoffrey Taylor and Mrs. Tammy Travis-Taylor (e)  
 Ann and Steve Templeton  
 Thompson Foundation  
 United States Gypsum  
 University of Detroit Mercy School of Law  
 Mr. and Mrs. Thomas M. Upton  
 Mr. Flamur Vaka  
 Jim and Emilie Van Bochove (e)  
 Sandra and James Vandenberghe  
 Ms. Amanda Van Dusen and Mr. Curtis Blessing  
 Mr. Dennis VanWormer and Ms. Sharon Mischakoff  
 Vector North America Inc.  
 Veoneer  
 Mr. and Mrs. Stephen Veresh, Jr.  
 Mrs. Donna M. Viel  
 Bill and Sue Vititoe  
 Vlasic Family  
 Mrs. Margaret E. Wade  
 Mrs. Betty Wakefield  
 Walbridge  
 Dan and Susan Walters  
 Carolyn Ward and Al Redding (e)  
 Lee R. Ward and Carol C. Ward (e)  
 Mr. John J. Wasilewski  
 Wayne RESA  
 Ms. Susan Webb  
 Susan Webster  
 Ms. Shirdel Welsh and Ms. Karla Jurgensen  
 Susan R. White  
 Ralph C. Wilson, Jr. Foundation  
 Bill and Janne Wissel  
 Woco Tech USA  
 Mr. J. D. Woods  
 Dr. In Kwang Yoon  
 Dr. and Mrs. Douglas Zakolski  
 Zingerman's  
 Mr. and Mrs. John R. Zitnik

**\$500-\$999**

Anonymous  
 Terri Anderson (e)  
 Ms. Nancy Avalos  
 Ms. Renee Axt  
 Azimuth Capital Managment LLC  
 Bank of America Matching Gifts  
 Dr. Jayapalli R. Bapuraj  
 Ms. Victoria Barbee  
 Ms. Kathryn Benesh  
 Mr. and Mrs. John Bernardi (e)  
 Mr. James Binson  
 Mr. and Mrs. Martin Bloch  
 Blue Cross Blue Shield of Michigan  
 Mr. Philip Bocketti

Mr. Donald Bovee  
 Ms. Jeannette Bradshaw  
 Barb and Fred Brandenburg  
 Ms. Jacqueline Brown  
 Mr. and Mrs. Eduardo Caraballo  
 Mr. Mark Carpenter  
 Center for Arab American Philanthropy  
 Ms. Mary Chamberlain  
 Mr. and Mrs. James M. Chandler  
 Judith Clay  
 Mr. and Mrs. Thomas Contreras  
 Mr. and Mrs. David E. Corba  
 Ms. Tara Crane and Ms. Renee Gray  
 Mr. and Mrs. Danny Dawes  
 Ms. Heather Day  
 Harvey and Sharon Dean  
 Ms. Michelle Delarosa  
 Mr. and Mrs. Norman C. Dell  
 Mr. and Mrs. Keith A. Dodsworth  
 Mrs. Monica Doettl  
 Mr. and Mrs. Thomas Dworman  
 Mr. Robert Etherington  
 Mr. Albert Faraj  
 Ms. Jeanette Ferguson  
 Mr. and Mrs. William L. Fisher  
 Ms. Pamela Folian  
 Mr. Keith Frank  
 Mr. and Mrs. Rivan F. Frazee  
 Ms. Carol Gerlach  
 Mr. and Mrs. Hugh B. Gulleddge  
 Mr. and Mrs. Joseph A. Gutierrez  
 Mr. Weijian Han  
 Ms. Danielle Hanser  
 Ms. Camille Harrison  
 Mr. Matthew Hays  
 Mr. and Mrs. Richard D. Hoolsema  
 Mr. and Mrs. Charles M. Hornick  
 Joseph and Jean Hudson  
 Mr. Steven Johnson, Sr.  
 Ms. Michelle Jonna  
 Mr. Heber Kaiser  
 Dr. James Kelly and Ms. Mariam Noland  
 Mr. and Mrs. David Kennedy  
 Ms. Julie Klein  
 Ms. Juliana Kostoff  
 Mr. Richard Kujat  
 Mr. Sham Kunjur  
 Sandra L. Kyte (e)  
 Dr. and Mrs. Robert Levy  
 Mr. Bob Livingston  
 Ms. Elaine Loeschner  
 Mr. James Long and Ms. Judith Kemble  
 Mr. Stephen Lukas and Ms. Nancy Clinton  
 Mr. and Mrs. Robert B. Mackey  
 Mr. and Mrs. Thurgood Marshall, Jr.  
 Ms. Cynthia Martell  
 Masco Corporation  
 Mr. and Mrs. Thomas S. McCullough  
 Mrs. Melissa McKissen  
 Mr. and Mrs. James P. McLennan  
 Ms. Jessica Mellinger  
 Mr. and Mrs. Fred Millar  
 Mr. and Mrs. David J. Montera  
 Jennifer Moody (e)  
 Gary L. Ott  
 Maura and Christian Øverland  
 Mr. and Mrs. Dennis A. Pietrowski  
 Mrs. Pamela K. Pour

Mr. Gregory Puscas  
 Mr. Daniel Quick  
 Mr. Andrew Reid  
 Mr. and Mrs. John R. Repp  
 Mrs. Janet V. Rex  
 Robert W. Baird & Co.  
 Mr. and Mrs. Thomas R. Rockwell  
 Ms. Laura Roelans  
 Ms. Frances Rudd  
 Mr. Robert Rumpz  
 Ms. Jolene Ryntz  
 Mr. Charles Saul  
 Ms. Jacqueline Schiller and Ms. Suzanne Morrison  
 Mr. and Mrs. Carl V. Schmult, Jr.  
 Steve and Beth Schroeder  
 Kirk and Cyndi Schutter  
 Ms. Cathy Sears  
 Bradley Simmons  
 Mr. and Mrs. William A. Slat  
 Smith Carpentry, LLC  
 Ms. Susan M. Smith  
 Ms. Susan Standafer  
 Ms. Gwen Stesiak and Ms. Susan Maurus  
 Mr. and Mrs. John R. Suriano  
 Mr. Michael Tate  
 Mr. and Mrs. Leonidas Tavoularis  
 Vivian L. Taylor  
 Mr. Thomas Tipi  
 Dr. and Mrs. William E. Townes  
 Captain Joseph F. Walsh (e)  
 Mrs. Olga Wierszewski  
 Tom and Anne Woiwode  
 Dr. and Mrs. Hiroshi Yamasaki  
 Mr. Ronald Yee  
 Ms. Mary Zatina and Mr. Kevin Prihod  
 Mr. and Mrs. Thomas M. Zerger  
 Dr. and Mrs. Seymour Ziegelman

**\$250-\$499**

Mr. John Abels  
 Mr. and Mrs. Terrance Adams  
 Mr. and Mrs. Gregory A. Albright  
 Mr. and Mrs. Ali Alhimiri  
 Mr. and Mrs. Samuel J. Alvarado  
 Mr. and Mrs. R. D. Anderson  
 Rosemary and John Austgen  
 Mr. and Mrs. Steve Bailo  
 Ms. Debra Bake  
 Jim and Nancy Barber  
 Mr. Kumar Batalada-Lakshmana  
 Bath Planet  
 Ms. Sharon Bazzell  
 Mr. and Mrs. Michael S. Beebe  
 Mr. and Mrs. John Beirne  
 Ms. Raylene Belanger and Ms. Linda Karrick  
 Mr. and Mrs. Matthew Bentley  
 Mr. Edward Benz  
 Mr. and Mrs. Morris Bergstein  
 Mr. Alton Berry  
 Mr. and Mrs. Randal M. Billian  
 Mr. and Mrs. Douglas Blake  
 Ms. Kristy Bledsoe  
 Ms. Renee Blohm  
 Mr. and Mrs. Charles B. Bonnen  
 Robert and Lucille Bott  
 Mr. and Mrs. Thomas Boudrie  
 Ms. Susan Brandon  
 Mr. Earl P. Breen

Mr. and Ms. Greg Brennan  
 Ms. Theresia Brink  
 Mr. and Mrs. Douglas C. Brown  
 Ms. Sandra Bruss  
 Mr. and Mrs. James B. Buck  
 Ms. Deanna Budzyn  
 Mr. and Mrs. Scott Burbank  
 Mr. James Burk  
 Beverly Butler  
 Ms. Karla Caddell  
 Michael and Odelle Cadwell (e)  
 Lee E. Cagle (e)  
 Ms. Heather Campbell-Lieberman  
 Mr. Lee Carlson  
 Mr. and Mrs. Patrick Carpenter  
 Mr. TR Carr  
 Mr. and Mrs. Craig Carson  
 Mr. Robert Casey  
 Mr. Seamus Cassidy  
 Mr. and Mrs. Thomas M. Cebull  
 Ms. Ruth Cedano-De-Guereca  
 Ms. Christina Char-Palo  
 Mr. and Mrs. John P. Charters  
 Mr. Adam Chase  
 Ms. Joan Chura  
 Mr. Fred Chynchuk  
 Beverly and Reginald Ciokajlo  
 Ms. Renae Clark  
 Mr. Mark Colizza  
 Complex Weavers  
 Mr. and Mrs. Roger Cook  
 Dennis and Mary Lou Corrigan  
 Mr. and Mrs. Benjamin Cotton  
 Jonathan Crane  
 Mrs. Bernadine Crepeau  
 Anna and Dan Cronin (e)  
 Mr. Jon Crosthwaite  
 Ms. Beatrice F. D'Ambrosio  
 Ms. Abby Dassance  
 Mr. Michael J. David  
 Ms. Michele Davis  
 Mr. and Mrs. William B. Dedinsky  
 Mr. and Mrs. Dennis DeGiorgio  
 Mr. Michael W. Degner  
 Mr. and Mrs. David Dellinger  
 Mr. and Mrs. Mark Demorest  
 Mrs. Carol M. Dettling  
 John Brian Devlin  
 Dr. and Mrs. Andrzej Dlugosz  
 Lish Dorset (e)  
 Ms. Jeanine Dotson  
 Tim Dowling (e)  
 Ms. Jeanette Dubrul  
 Ms. Patricia Ducher  
 Mr. Tim Duncan  
 Ms. Debra Dyck  
 Mr. and Mrs. Donnie Dykes  
 Mrs. Donna Eckman  
 Mr. Jerald Eden  
 Brian, Jody, and Scarlett Egen (e)  
 Mr. and Mrs. Fred J. Elias  
 Ms. Lorie Elitawi  
 Mr. Eric Ellenbrook  
 Ms. Chereyynn A. Elliott  
 Mr. and Mrs. William Elliott  
 Mr. and Mrs. James J. Endres  
 Ms. Susan Evans and Ms. Darlene Jezewski  
 Vickie L. Evans (e)

Mr. and Mrs. James Ewing  
 Mr. Zane Feitshans  
 Mr. John C. Fellows  
 Mr. and Mrs. John T. Fennell  
 Mr. Mason Ferry  
 Ms. Fran Fields  
 Mr. and Mrs. James A. Fink  
 Mr. and Mrs. Kenneth C. Fischer  
 Mr. Joseph P. Flinn  
 Mrs. Mary Margaret Flinn  
 Mrs. Charlotte M. Ford  
 Mr. and Mrs. Alan A. Forsyth  
 Mr. and Mrs. Denny Fox  
 Mr. and Mrs. Stuart Frankel  
 Ms. Karen Frankowiak  
 Ms. June Frazee  
 Mrs. Debra Galik and Ms. Nicole Fons  
 Mrs. Margaret Gaugler  
 Mr. and Mrs. Richard A. Geno  
 Mr. and Mrs. Tom Giles  
 Mr. and Mrs. Andrew Glennie  
 Ms. Erika Golematis  
 Patricia Gosik  
 Ms. Brooke Green and Mr. Vaughn Lippert  
 Mr. and Mrs. Kenneth Gulling  
 Ms. April Gurka  
 Mr. Brian Gutowski  
 Mr. Gale Halderman  
 Mr. Donald Hall  
 Mr. and Mrs. John Hallahan  
 Mr. Marc Halliburton  
 Ms. Stephanie Hames  
 Mr. and Mrs. Howard Hamilton  
 Mr. Matthew D. Hammond  
 Robert E. Hanna (e)  
 Mr. and Mrs. Robert A. Hardin  
 Mr. and Mrs. Richard Harkness  
 Mr. and Mrs. James J. Hassett  
 Ms. Roberta Hatch  
 Ms. Kathy L. Hayes  
 Mr. and Mrs. Raymond J. Henson  
 Mr. Stephen Herrmann  
 Mr. Wayne M. Hertlein  
 Ms. Leah Hettinga  
 Mr. Dennis Heyza  
 Mr. Billy Himes  
 Mr. and Mrs. Orville J. Hokschi, Jr.  
 Ms. Heather Holmer  
 Jim Holubka  
 Mr. and Mrs. Greg Hooper  
 Mrs. Janet Houghtby and Ms. Katherine Wilmoth  
 Mr. Todd Houston  
 Mrs. Lucie Howell (e)  
 Mr. and Mrs. Roy M. Howington  
 Michael Humenik (e)  
 Mr. and Mrs. Scott L. Hunter  
 Mr. and Mrs. Timothy Ianitelli  
 Mrs. Sandra A. Jackson  
 Mr. and Mrs. Dennis Janowski  
 Ms. Karen W. Jeppson  
 Ms. Annetta Johnson  
 Drs. Kent and Mary Johnson  
 Mr. Jason Joyce  
 Mr. William J. Kaminski  
 Denise and Robert Katner  
 Mr. and Mrs. Gary M. Keller  
 Mr. James Keller  
 Ms. Teresa A. Kiessling



## 2018 DONORS / \$250-\$499 (CONTINUED)

Ms. Kathleen Kincaid  
Mr. and Mrs. Bruce Kindred  
Ms. Ann Kish  
Ms. Margaret Kish and Ms. Dolores Gdula  
Mr. Steven Kleinlein  
Mr. Eric Kleitch  
Mrs. Patsy Knoop  
Ms. Emily Koch (e)  
Mr. David Kohne and Ms. Mary Wermuth  
Ms. Sandra Kopas  
Mr. Lorne Kowalsky  
Ms. Susan Krichbaum  
Mr. and Mrs. Arthur Kroll  
Mr. and Mrs. Robert A. Kubiak  
Richard Kughn  
Ms. Dawn Kulongowski  
Mr. and Mrs. John LaCroix  
Mr. and Mrs. Ronald Laing  
Mr. and Ms. David E. Laurin  
Ms. Christine Law  
Mr. and Mrs. Michael V. Lennon  
Mr. and Mrs. Harry Lenox  
Mr. and Mrs. Jon E. LePage  
Mr. Jason Letzkus  
Mr. and Mrs. Robert D. Levi  
Mr. Gary Lewis  
Amy Louise Liedel (e)  
Ms. Wendy Long  
Mr. and Mrs. Richard Lucas  
Mr. and Mrs. R. Curtis Mabbitt  
Mr. Matthew M. Madaras  
Matthew and Melissa Majeski (e)  
Ms. Lana Mangiapane  
Mr. and Mrs. Thomas Marshall  
Ms. Pearl Matthews  
Mr. Kyle Mayville and Ms. Elizabeth Vargo  
Jim, Susan and Betsy McCabe (e)  
Mr. and Mrs. Craig McCardell  
Ms. Kathleen McCaughna and Mr. David Mason  
Andrew and Jeanine McCloskey  
Jason McCracken  
Mr. Robert McCurdy  
Mr. and Ms. Andrew McGee-Squires  
Mr. and Mrs. Patrick G. McKeever  
Mr. and Mrs. Thomas A. McKenty  
Mr. Jamie McKnight  
Mr. and Mrs. John P. McParland  
Mr. and Mrs. Gilbert W. Mervis  
Gordy Michael (e)  
Ms. Erin Michaelis  
Mr. and Mrs. Eugene A. Miller  
Mr. Nebojsa Milojevic  
Ms. Amanda Miron  
Mr. and Mrs. Grant D. Mitchell  
Mr. and Mrs. Gary Mondello  
Mr. and Mrs. Joseph J. Mooradian  
Mr. and Mrs. David Moore  
Mrs. Tracy Morisi  
Mr. and Mrs. Anthony Morrow  
Mike and Sue Moseley (e)  
Ms. Tressa S. Mucci  
Mr. and Mrs. Christopher B. Mushenski  
Ms. Sandra Nader and Ms. Anna McGowan  
Amy Nasir (e)  
Ms. Therese Nawalaniec  
Mr. Eugene Nelson  
Mr. and Mrs. Kenneth Nelson  
Ms. Barbara Neuenschwander

Ms. Marlene Newman  
Mr. and Mrs. Ronald Nicholson  
Mr. Christopher Nowak  
Ms. Lisa A. Olsen  
Mr. and Mrs. Fred Ong  
Mr. and Mrs. Dan Opal  
The Honorable and Mrs. John B. O'Reilly, Jr.  
Mr. Richard Orr and Ms. Rachel Frasure  
Sarah J. Orvis  
Merlene and Michael Osinski (e)  
Mr. Dieter Otto  
Mrs. Marilyn Owens and Mr. Dennis Ostrom  
Mr. and Mrs. Paul H. Ozment  
Richard and Kathleen Pagac  
Mr. Michael Paggi  
Ms. Dolores Palmi  
Mr. and Ms. Michael Palo  
Mr. John Palyu  
Mr. and Mrs. Scott Parent  
Kevin Patten (e)  
Mr. and Mrs. Michael E. Peets  
Ms. Dorothy Perry  
Joanne Szpara Peterka (e)  
Ms. Kelly Peters  
Mr. and Mrs. Robert Peterson  
Mr. and Mrs. Robert V. Peterson  
Mr. and Mrs. Jeffrey Petts  
Mses. Sarah and Shannon Pinchot  
Michael and Mildred Pivoz  
PLEX Systems, Inc.  
Ms. Anne Marie Ploucha and Mr. John Bodnar  
Richard and Judith Polcyn  
Mr. and Mrs. Francis Porretta  
Mr. and Mrs. David J. Portelli  
Mr. and Mrs. Donald L. Potter  
Mr. and Mrs. Philip Potter  
Ms. Stephanie Powell  
Mr. Benjamin Puckett  
Gregory and Tiffany Pucko (e)  
Melanie Raisanen (e)  
Ms. Wanda Ray and Ms. Dolores Adkins  
Mr. Harold Rees  
Mrs. Charlene Reid  
Mr. and Mrs. John A. Reinicke  
Ms. Eileen Reynolds  
Nicole D. Riggs (e)  
Mr. Frank Rivera  
Mr. Matthew Roberge and Ms. Danielle Pusilo  
Mr. William Robert  
Ms. Beverly Robertson  
Mr. and Mrs. William Robinson  
Mr. Randy Robison  
Mr. David Roggenkamp and Ms. Colleen Dargie  
Mr. and Mrs. John J. Ronayne III  
Mr. Joseph Ross  
Ms. Mona Rovin  
Ms. Catherine Rowan  
Mr. and Mrs. Judd A. Rowe  
Mr. and Mrs. Dennis C. Rule  
Ms. Andra Rush  
Ms. Genny Russell  
Suzanne I. Saikalis  
Mr. Scott J. Saionz  
Ms. Laura Sakata  
Mr. Daniel Samson  
Ms. Constance Sandrowicz  
Ms. Renee Sansoterra  
Al Savage (e)

Mr. and Mrs. James A. Schira  
Miles. Mary Lou and Heather Schneemann  
Mr. and Mrs. John Schnoes  
Mr. and Mrs. Eric J. Schoettle  
Mr. and Mrs. Stan Schulz  
Mrs. Maryann Schumann  
Ms. Linda Scroi  
Ms. Sharon A. Sellepack  
Emily J. Shannon (e)  
Ms. Miriam Shaw  
Mr. and Mrs. Gregory A. Shea  
Ms. Susan Sherer  
Ms. Marilyn Shewcraft and Ms. Jennifer Blalock  
Mr. Craig Sidelinger  
Mr. and Mrs. Richard Sikora  
Mr. and Mrs. Vincent J. Simonetti  
Dr. and Mrs. Robert L. Simpson  
Mr. Joseph Singerman  
Mr. and Mrs. Michael W. Skinner  
Mr. and Mrs. Dwight R. Smith  
Ms. Jannette Smith  
Mr. Paul Smith  
Mr. and Mrs. David L. Snyder  
Mr. Louis Sobol  
Ms. Lisa Somes  
Richard and Linda Spranger  
Ms. Suzanne Spurlock  
Ms. Cyndie Stewart  
Ms. Donna Stitt  
Mr. and Mrs. Timothy Stokes  
Ms. Linda Stonebreaker  
Mr. and Mrs. Leonard J. Stramel  
Ms. Elisabeth Strek  
Ms. Kathryn Strong  
Ms. Theresa Strong  
Mr. Mark Stump  
Ms. Xiaodong Sun  
Mr. Wesley Swack  
Mr. Edward Sype  
Ms. Meggan Tavel  
Mr. Arend Tenhove  
Mr. Jason This  
Mr. Reginald Thomas  
Amy Thompson (e)  
Ms. Cynthia Thompson  
Thrivent Financial  
Mr. and Mrs. Michael J. Tomkins  
Robert Topping  
Ms. Mary Ann Tracy  
Mr. Ronald Trygg and Mr. Brandon Trygg  
Ms. Jill Twehues  
Mr. and Mrs. Robert Tyler  
Mr. and Mrs. James Tyson  
Ms. Lynda L. Ufer  
Mr. and Mrs. Andrew Ursell  
Ms. Lakshmi Vadiamudi  
Dr. Phyllis A. Vallee  
Ms. Gloria Vanderlugt and Ms. Rebecca Glover  
Ms. Glenda Velasquez  
Mr. and Mrs. Robert J. Viazanko  
Mr. and Mrs. Ralph G. Vidusic  
Mr. and Mrs. Randal H. Visintainer  
Mr. and Mrs. Herbert C. Von Rusten  
Steven Vozella  
Mr. and Mrs. Daniel C. Wagner  
Mr. David Wagner and Ms. Janie Funk  
Ms. Kathryn Walby  
Ms. Bonnie Walter

Scott L. Ward (e)  
Ms. Sarah Watt  
Bob Webber (e)  
Mr. and Mrs. Larry A. Wegrzyn  
Ms. Candy Weldon  
Ms. Jennifer Wellman  
Mr. and Mrs. Thomas D. Wernholm  
Mr. Chris J. White  
Mr. Craig A. Whitford  
Mrs. Jane A. Wicke  
Ms. Marta G. Williams  
Mr. and Mrs. Raymond Willits  
Mr. and Mrs. Richard Winder  
Mr. Gregory Winnicki  
Mr. Wayne Wolf  
Ms. Michele Wolowiec  
Mr. and Mrs. David E. Wood  
Mr. Charles Woodford  
Mr. Robert Zaagman  
Mr. Danial Zak and Mr. Joshua Paletta  
Mr. and Mrs. Ken Zalusky  
Mr. Greg Zavis  
Rev. and Mrs. Richard Zeile  
Mr. Ahmad Zeitoun  
Mr. Nicholas Zimmer

## CLARA BRYANT FORD SOCIETY

Membership in the Clara Bryant Ford Society is reserved for those generous donors who have made planned or legacy gift commitments to The Henry Ford.

Anonymous (3)  
Richard E. Allen  
Carl R. Allison  
Wendell W. Anderson, Jr.  
Lowell and Ann Apeseche  
Olton T. and Irene Apeseche  
Estate of William Lamont Austin  
Estate of Billy Hiram Thomas Barnett  
Estates of David and Jane Barton  
Daniel Baumhardt  
Raymond Beighley  
William Bell  
William W. Boeschstein  
Estate of Frederick Bonacker, Jr.  
Denis and Patricia Bork  
Estate of Benjamin Thomas Bootle, Jr.  
Estates of Carleton and Hazel Brown  
Cynthia Brush  
Ford R. Bryan  
Mary Lou Burke  
Carr Roberts Buscher  
Gail L. Caldarea  
Peggy and Ray Campbell  
Michael J. Choffnes  
Estates of Henry Austin and Waleta Clark  
Estate of Shirley E. Cook  
Estate of Margaret Cooper  
Estate of Keneth J. Coran  
Maryann Csizmansky  
Estate of Marion Ara Cusimano  
Shirley Damps (e)  
Paul R. Dimond (t)  
Estate of Carmen Dunn  
Estate of Charles V. Elder  
Estates of Henry and Clara Bryant Ford  
William Clay Ford

Barbara Fritz  
Estate of Mary Isabelle Gilbert  
Lawrence T. Gilbert  
Marcia Sue Gurecky  
Estates of Charles V. and Katherine Hagler  
Patrick Hancock  
Estate of Henry C. Hansen  
Dr. and Mrs. Reginald Harnett  
Jon D. Hartman  
Leonard Hitz  
Estate of Sidney G. Hughes  
Estate of J. J. Humberstone  
Richard and Christine Jeryan  
Freda G. Johnson  
Beverley J. Joyce  
Estate of William Kelly  
Penny Klai  
Brian A. Kutscher  
Amy LaBarge and Ronald Beeber  
Mr. and Mrs. Richard W. Lambrecht, Jr.  
Gretchen Renee Lawrie  
Estate of Carrol Lewis  
Joseph Lile  
Jerome Lothamer  
Lillian I. MacLean  
Estate of Barbara Ann Maher  
Estate of Louise S. Marshall  
John W. Mazzola  
Vanessa C. McCormick  
W. Clark Miller  
Patricia E. Mooradian (t) (e)  
Estate of Pearl Norine Neussendorfer  
Claudia J. Nickel  
Tim and Diann Pendell  
Mr. and Dr. David L. Pennell  
Estate of Robert E. Reinecke  
Estate of Marie Louise Remick  
Dick and Helen Reyhl  
Patrice and William Robertie  
Estate of Carl Rudolph, Jr.  
Estates of Carleton and Eleanor Safford  
Ralph E. and Irene Saleski  
Estate of Panagonla Mary Schistos  
Steve Schroeder  
Estate of William Warren Shelden  
Mr. and Mrs. William I. Sikora  
Estate of Bruce Simpson  
Edwina M. Simpson  
Mr. and Mrs. William Sosnowski  
Gilbert Stewart  
Estate of Edwina Surdyk-Mitz  
Estate of Helen Antonia Talarek  
Larry P. Turek  
Robert J. Turek  
Steven Vozella  
Marge and Tony Wade  
Linda A. Wall  
Ambassador Ronald N. Weiser (t)  
Estate of Arthur A. Wiese  
Estate of Reamer W. Wigle  
Estate of Carl Alois Wolf  
Estate of Dorothy O. Zink  
Estate of John Zyntarski, Jr.

## GIFTS IN HONOR

The following were honored by others who made a gift to The Henry Ford in their name.

Anonymous  
Lish Dorset (e)  
Diana Nowak  
Christian Øverland  
Larry Watson  
Bruce Wilson (e)

## GIFTS IN MEMORY

The following were honored by others who made a gift to The Henry Ford in their memory.

Lowell Apeseche  
Rosemary and John Austgen  
Donald Baker  
Joseph Brody  
Andrew Claps  
Joseph N. Cleveland  
Kathy Cline  
Barbara Dodge  
James J. Doettl  
Paul A. Garland  
Robert E. Hlavaty  
George J. Hoelaars  
Georgine "Geordie" Jensen  
Ed Johnson  
Frederick Ketner  
Keith Kitche  
Nancy Koehler  
William Wastell

## GIFTS IN KIND

Cantor Colburn LLP  
CIBER, Inc.  
Cooley LLP  
Ford Motor Company  
Herman Miller, Inc.  
Honigman Miller Schwartz and Cohn, LLP  
HTC Global Services  
IDEAZ  
Michael Choffnes  
Octane Design  
Real Integrated  
Ruth Mossok Johnston & David McCall Johnston  
University of Michigan-Dearborn  
WilmerHale

## DONORS TO THE COLLECTIONS

The following donated objects to the collections in 2018.

Family of Margaret Miller Woessner Arnold  
Georges Atty  
George Barnes  
David and Margaret Barton  
Giles Bettison  
Jane L. Bradbury  
Kristen Gallerneaux Brooks (e)  
Robert H. Casey  
Mike and Darlene Cook  
Melvin O. Crosslin  
Laura Donefer  
Gay Engelberger  
Bob and Joyce Fria



**DONORS TO THE COLLECTION / (CONTINUED)**

General Motors  
 Linnea B. Graves  
 In Memory of Herberth E. Head, Jr.  
 Wilma Carrico Head  
 Christine Hibbard  
 Jacob Hildebrandt  
 Estate of Jean Risinger Hoff  
 Andrew "bunnie" Huang  
 Thomas Huenefeld  
 Industrial Designers Society of America  
 Christine B. Jeryan  
 Elaine Kaiser  
 Ruth M. Kollver  
 Antoinette Korzetz  
 Lisa A. Korzetz  
 In Loving Memory of Eleanor Paul Kraak  
 David and Prindle LaBarge  
 Michael and Stephanie Chontos Lucas  
 Susan Gangwere McCabe  
 Estate of Mrs. Frank (Elsie) McCormick  
 Estate of E. Quirk and Helene McGrath  
 In Memory of the McKenna, Morrison and Menard Families  
 Royal J. Medley  
 In Memory of Basil "Jug" Menard  
 Jeanine Head Miller (e)  
 In Memory of Joseph Miranowicz and Walter J. Miranowicz, Jr.  
 Effie Morris  
 Emily Nietering  
 Eva L. Otto  
 In Memory of Homer L. Perry  
 Debra A. Reid (e)  
 James Nolan Reimer  
 Raymond Reines  
 In Memory of Augusta Roddis  
 Davide Salvatore  
 Benjamin D. Schoun  
 Devereau B. Sellin  
 Shell Oil Company  
 Mary Sherman  
 Joan B. Smith  
 Joseph H. Somers  
 Lyn St. James  
 Norman F. Swanson  
 Family of Jacqueline Bergey Ward  
 Katherine White (e)  
 Dave Zaleski  
 Stephen J. Zelle

**MATCHING GIFT ORGANIZATIONS**

The following organizations matched their employees' gifts to The Henry Ford. Please check with your own organization to see if it has a program that can match your gift in 2019.

Bank of America Matching Gifts  
 Community Foundation for Southeast Michigan  
 DonateWell

Eaton Corporation  
 Fred A. and Barbara M. Erb Family Foundation  
 Ethel and James Flinn Foundation  
 GE Foundation  
 IBM International Foundation  
 The Kresge Foundation  
 Masco Corporation  
 Network for Good  
 Pfizer Foundation  
 PLEX Systems, Inc.  
 PricewaterhouseCoopers LLP  
 Rockwell International Corporation Trust  
 Thrivent Financial  
 Ralph C. Wilson, Jr. Foundation

**CORPORATE MEMBERS**

The Henry Ford is pleased to thank and recognize its 2018 Corporate Members.

A & K Research  
 Acro Service Corporation  
 Alfonsi Railroad Construction  
 Altair Engineering  
 Alumni Association of University of Michigan  
 American Axle  
 Aristeo Construction Co.  
 AutoLiv  
 Baker College  
 Bank of America  
 Barton Malow Company  
 BASF Corporation  
 Benefit Outsourcing Solutions, Inc.  
 BorgWarner Inc.  
 Brandt Street Properties  
 Buddy's Pizza  
 Capuchin Ministries  
 Carhartt, Inc.  
 C. F. Burger Creamery  
 Citizens Bank  
 Citizens Insurance  
 Clark Hill PLC  
 Comfort Keepers of Plymouth  
 Dearborn Federal Savings Bank  
 Dearborn Sausage Company, Inc.  
 DENSO International America, Inc.  
 Detroit Lions  
 DFCU Financial  
 Domino's Pizza, Inc.  
 Downriver Community Federal Credit Union  
 Dresner Foundation  
 DTE Energy Foundation  
 DTE River Rouge Power Plant  
 DTE Trenton Power Plant  
 E.W. Grobbel Sons, Inc.  
 Ford Motor Company Fund  
 Garden City Hospital  
 General Electric Company  
 General Motors  
 Gordon Food Service

Grunwell-Cashero Co., Inc.  
 Hella Corporate Center USA  
 HelloWorld  
 Henry Ford Village  
 Henry Ford Village Wellness Center  
 Honigman Miller Schwartz and Cohn LLP  
 The Ideal Group  
 ITC Holdings Corp.  
 J.S. Clark Agency, Inc.  
 Kelly Services  
 KPMG  
 Kuka Flexible Production Systems  
 Lear Corporation  
 Life Bridge Church  
 LOC Federal Credit Union  
 Macy's  
 Madonna University  
 Marathon Petroleum Co.  
 Oliver Dewey Marcks Foundation  
 Masco Corporation  
 Masco Corporation Foundation  
 Michigan Credit Union League  
 Michigan First Credit Union - Lathrup Village  
 Michigan Surgery Center  
 Microsoft Corporation  
 MTU America, Inc.  
 Oasis Advanced Engineering, Inc.  
 Peake Recovery, Inc.  
 Pentastar Aviation, LLC  
 PepsiCo Foodservice  
 Peter Basso Associates, Inc.  
 Peterson Spring  
 Plante & Moran  
 Printwell Printing Company  
 PSCU  
 Ramco Gershenson  
 Real Integrated  
 Seco Tools Inc.  
 Starting Point  
 Sumitomo Corporation of America  
 Sysco Food Services of Detroit L.L.C.  
 Thompson Foundation  
 United States Gypsum  
 Vector North America Inc.  
 Veoneer  
 Village Ford, Inc.  
 Walbridge  
 Wayne RESA  
 Woco Tech USA  
 Zeal Credit Union  
 Zingerman's

# Volunteers

In 2018, we had 503 volunteers contribute 80,504 hours. This is the equivalent of 38 full-time staff.

# 80,504

hours of service were given by our volunteer corps.

We would like to thank the volunteers listed below who gave 100 hours or more of service in 2018.

Katherine J. Adamski	Mary C. Cunningham	Denise M. Hester	Kathy J. Marx	Norman G. Spohler
Terry Alexander	Mark J. Dauter	Rita M. Hill	Eileen J. Matuszewski	Robert W. Stead
Diane Anderson	Cassandra R. Davis	Gary P. Hillebrand	Deborah A. McLellan	Carol J. Steiner-Glover
Paula M. Anderson	Juanita Davis	William V. Hischke	James E. McVicar	William M. Stewart
Kathleen M. Andreas	Harvey R. Dean	William N. Hope	John M. Merriman	Jane E. Sumner
Joan Z. Aniol	Sharon J. Dean	Yvonne Hudak	Joy A. Michalsen	Marcia A. Sutka
Gordon Arndt	Emilee E. Deeter	Paul L. Hunkele	Sharon R. Mikaelian	Mikayla Swasey
Robert Assenmacher	Sue A. DeLage	Judy Janzen	Sandra L. Milani	Norma Swires
Bill Balwinski	Marie F. Derrick	Ann V. Jenkins	Carlton A. Milbrandt	Darlene E. Taylor
Jane Balwinski	Andrew H. Dervan	William K. Jentzen	Cheri Montreuil	Ronald V. Tiburzi
Matthew J. Barkhaus	James D. Deyo	Christine B. Jeryan	Clifford N. Montreuil	Gary W. Tisdale
Veronica A. Beaudry	Marcus W. Dickson	Frank Jones	Margaret E. Montrieff	Robert T. Topping
Douglas E. Beaver	Orazio A. DiRezze	Nancy A. Kelley	Nick A. Moroz	Margaret Triplett
Patricia D. Beggs	Kathleen A. Dombrowski	Judy A. Kilhefner	Lawrence O. Murray	Edward Tumas
Robert T. Beggs	Robert D. Downing	Judith L. Kirsch	Michelle Nappo	Larry Turek
Susan K. Bejin	Suzanne E. Edick	Margaret G. Kish	Johnann L. Nielsen	Lynda L. Ufer
Eric C. Bergmann	Marcia A. El-Asfahani	John A. Klavonian	Emily A. Nietering	Jim Urbanski
William J. Bialkowski	John D. Engfehr	Pamela Kleinow	Sam Norello	Mary Ushman
Bridget E. Billian	Therese I. Faletti	Calvin D. Knopf	Marilyn Norgrove	Paula M. Vaught
Douglas Blake	Francis D. Falkowski	George D. Kopp	Mose R. Nowland	Linda A. Veresh
Mary J. Boldt	Richard F. Fellrath	Joyce C. Kopp	Carol A. Oldenburg	James Vince
Robert L. Bott	Michael H. Fenchel	Chris A. Kulick	Joseph F. Oldenburg	Steven R. Vozella
Donald R. Brasie	Michael H. Fogarty	Linda S. O'Neill	Beverly J. O'Neill	James K. Wagner
Rosemary Brasie	Maxine V. Fontana	Patricia L. Orr	Patricia L. Orr	Melody E. Walters
Barbara Brooks	Linda L. Ford	Gerald L. Otto	Gerald L. Otto	Michael J. Walters
Mark R. Brown	Kathleen R. Fox	Andre J. Palardy	Andre J. Palardy	Grace E. Wangbickler
Ruth Bruce	Douglas E. Frank	Ian E. Papp	Ian E. Papp	John T. Warner
Henry F. Burger	Jill Franks	Leonard G. Porter	Leonard G. Porter	Lee E. Watson
Cheryll Burgess	Kenneth W. Fussell	Gregory M. Powell	Gregory M. Powell	Mary A. Watt
Mike Burgett	Marilyn C. Galante	Ronald H. Priestaf	Ronald H. Priestaf	David J. Watts
Kathleen M. Burns	Gil H. Gallagher	Brenda E. Purkiss	Brenda E. Purkiss	Charles Webster
Mark P. Bush	Ruth Gatza	Margaret A. Ritter	Margaret A. Ritter	Mildred J. Webster
Beverly S. Butler	Carmen A. Gentilcore	Dale A. Roeseler	Dale A. Roeseler	Larry A. Wegrzyn
Peter R. Caldwell	Gerald P. Gomes	Adam D. Samulski	Adam D. Samulski	Mellicent White
Maxine Callaghan	Leo A. Gorajek	Thomas F. Saroglia	Thomas F. Saroglia	Martha H. Whitfield
Catherine J. Caruthers	Jeffrey Gorman	Lisa A. ScaFidi	Lisa A. ScaFidi	Frank J. Wiecha
Catherine M. Cheslak	Adam W. Gorring	Suzanne B. Schaeffer	Suzanne B. Schaeffer	Irene M. Wiecha
Michael J. Choffnes	Maria A. Gramer	Eric J. Schillinger	Eric J. Schillinger	Gary J. Wlosinski
Jeannette M. Chumita	Karen A. Greig	Doug A. Scoda	Doug A. Scoda	Lawrence G. Wolfe
Larry Cingel	David Gruska	Sharon A. Sellepack	Sharon A. Sellepack	Joseph G. Wright
Allan B. Collins	George W. Gunlock	Todd R. Seroka	Todd R. Seroka	Linda J. Wulff
Pauline D. Colston	Barbara Hall	Mary M. Sharrow	Mary M. Sharrow	Dolores A. Yesh
Robert R. Cook	Catherine M. Hanes	Joan M. Sheridan	Joan M. Sheridan	Richard C. Yesh
Mary Lou Corrigan	Ronald A. Hanes	Carol A. Sizemore	Carol A. Sizemore	James J. Youmans
Alan Cotzin	Jay A. Harris	Alice E. Skelly	Alice E. Skelly	
Vickie Cummings	Adam T. Harwood	Arthur M. Sobiechowski	Arthur M. Sobiechowski	

**By supporting these organizations, you are also helping The Henry Ford fuel the spirit of American innovation and inspire an entrepreneurial, can-do culture.**

If your company is interested in investing with The Henry Ford through strategic partnerships, sponsorships or corporate membership, please call 313.982.6028 or email [sponsorship@thehenryford.org](mailto:sponsorship@thehenryford.org).



Nonprofit  
Organization  
U.S. Postage  
**PAID**  
Detroit, MI  
Permit #3004



## OUR MISSION

The Henry Ford provides unique educational experiences based on authentic objects, stories and lives from America's traditions of ingenuity, resourcefulness and innovation. Our purpose is to inspire people to learn from these traditions to help shape a better future.

For questions or information on how to donate:

Contact the Institutional Advancement Office at 313.982.6115 or visit [thf.org/support](http://thf.org/support).

**President and CEO**  
Patricia E. Mooradian

**Vice President, Historical Resources and Chief Curator**  
Marc Greuther

**Vice President, Business Development, Strategic Growth and Engagement**  
Carol Kendra

**Vice President and Chief Advancement Officer**  
J. Spencer Medford

**Vice President, Venues**  
John Neilson

**Vice President, Business Operations and Chief Financial Officer**  
Brent Ott

**Chairman of the Board**  
S. Evan Weiner

**Vice Chairman of the Board**  
Gerard M. Anderson

**Vice Chairman of the Board**  
Sheila Ford Hamp

**President and Secretary**  
Patricia E. Mooradian

**Treasurer**  
Lisa A. Payne

### Board of Trustees

- Lynn Ford Alandt
- Paul R. Dimond
- Edsel B. Ford II
- Henry Ford III
- William Clay Ford, Jr.
- William Clay Ford III
- George F. Francis III
- Ralph J. Gerson
- Eliza Kontulis Getz
- Christopher F. Hamp
- Steven K. Hamp
- John W. Ingle III
- Elizabeth Ford Kontulis
- Richard A. Manoojian
- Hendrik Meijer
- Bruce Meyer
- Mark L. Reuss
- Hau Thai-Tang
- Alessandro F. Uzielli
- Amb. Ronald N. Weiser

